

FREESTANDING STATION

FREESTANDING STATION



FREESTANDING STATION

With a Rousseau Freestanding Station, you can keep a wide variety of accessories within easy reach, from the simplest tools to computer parts, spools holders and electronic equipment.

Both the centered and off-centered stands give you fast access to every item stored on them. Stationary stands are available in 36"H, 54"H and 84"H models, and there are also 36"H and 54"H mobile versions for easily transporting your equipment to wherever you need it.

The layout of accessories on Rousseau Freestanding Stations can be easily changed without tools. Simply swap them in and out or rearrange them to ensure the stand evolves in line with your needs.



WMA4050

THE ROUSSEAU DIFFERENCE



Wide range of accessories for building a highly personalized layout.



All components are installed on the uprights with plastic screw knobs or hooks.



Easy and tool-free reconfiguration means that your system can evolve in line with your needs.



36"H and 54"H stands can be made mobile for added flexibility.

HOW TO ORDER

WHEN ORDERING, MODEL NUMBERS MUST BE COMPLETED AS FOLLOWS

0: For 32" wide (uprights 28" c/c)
3: For 38" wide (uprights 34" c/c)

WMA5 0

STATIONARY MODELS:
0: With floor anchoring kit
1: With leveling glides kit

MOBILE MODELS (54"H STANDS ONLY):
2: With handle and 4" casters: 2 rigid and 2 swivel with total-lock brake
3: With handle and 4" casters: 2 swivel and 2 swivel with total-lock brake
4: With handle and 6" casters: 2 rigid and 2 swivel with total-lock brake
5: With handle and 6" casters: 2 swivel and 2 swivel with total-lock brake

NOTE: Any accessories not mentioned in the description are not sold by Rousseau.

WM STAND STABILITY AND LOAD CAPACITY

LEGEND

Workstation is stable and safe
 Configuration not recommended

36"H AND 54"H STANDS

600
Per side

Maximum load capacity: 1,200lb. evenly distributed

84"H STANDS

700
Maximum

Maximum load capacity: 700lb. on one side or distributed over both sides

54"H FREESTANDING STATIONS

STOREKEEPER MODEL



WMA1012

- 1 centered WM stand, 54"H
- 8 plastic bin rails
- 1 document holder
- 1 bottom shelf with ribbed mat

| PRODUCT NO. | W x D x H |
|-------------|---------------------|
| WMA101_ | 32" x 27" x 59 1/4" |
| WMA131_ | 38" x 27" x 59 1/4" |



WMA1052

- 1 centered WM stand, 54"H
- 2 tiltable shelves
- 6 partial dividers
- 1 bottom shelf with ribbed mat
- 2 tiltable pans

| PRODUCT NO. | W x D x H |
|-------------|---------------------|
| WMA105_ | 32" x 27" x 59 1/4" |
| WMA135_ | 38" x 27" x 59 1/4" |

WIRE SPOOL MODEL



WMA1032

- 1 centered WM stand, 54"H
- 1 bottom shelf with ribbed mat
- 8 wire spool holders

| PRODUCT NO. | W x D x H |
|-------------|---------------------|
| WMA103_ | 32" x 27" x 59 1/4" |
| WMA133_ | 38" x 27" x 59 1/4" |

5S MODEL



WMA1382

- 1 centered WM stand, 54"H
- 2 tiltable shelves
- 2 utility panels
- 1 bottom shelf with ribbed mat
- 4 plastic bin rails
- 2 tool holders
- 4 heavy-duty round hooks
- 2 heavy-duty square hooks
- 2 wire spool holders
- 2 can holders

| PRODUCT NO. | W x D x H |
|-------------|---------------------|
| WMA108_ | 32" x 27" x 59 1/4" |
| WMA138_ | 38" x 27" x 59 1/4" |

PRECONFIGURED MODELS

84"H FREESTANDING STATIONS

TO ORDER

Product numbers must be completed with the option required from the following.

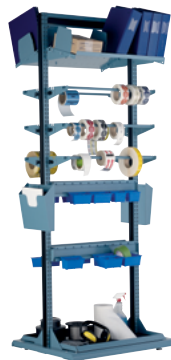
Stationary models:

0 = With floor anchoring kit

1 = With leveling glides kit

NOTE: Any accessories not mentioned in the description are not sold by Rousseau.

LABELING MODEL



WMA3021

- 1 centered WM stand, 84"H
- 2 tiltable shelves
- 6 partial dividers
- 4 plastic bin rails
- 6 wire spool holders
- 2 document holders
- 1 bottom shelf with ribbed mat

| PRODUCT NO. | W x D x H |
|-------------|-----------------|
| WMA302_ | 32" x 27" x 85" |
| WMA332_ | 38" x 27" x 85" |

REPAIR AND MAINTENANCE MODEL



WMA3031

- 1 centered WM stand, 84"H
- 2 cantilever overhead supports
- 2 overhead workstation lights
- 2 tiltable shelves
- 6 partial dividers
- 2 utility panels
- 1 panel bracket kit
- 2 packs of 10 double back single hooks
- 2 wire spool holders
- 2 vertical adapters for power outlet strip and pneumatic connection
- 2 power outlet strips
- 2 document holders with arm

| PRODUCT NO. | W x D x H |
|-------------|-----------------|
| WMA303_ | 32" x 27" x 85" |
| WMA333_ | 38" x 27" x 85" |

ELECTRONICS MODEL



WMA4041

- 1 off-centered WM stand, 84"H
- 1 cantilever overhead support
- 1 overhead workstation light
- 1 plastic bin rail
- 1 storage cabinet with door and lock
- 6 partial dividers
- 1 tiltable pan
- 1 vertical adapter for power outlet strip and pneumatic connection
- 1 power outlet strip
- 1 lamp with magnifier and LED light
- 1 adapter for light-duty arm

| PRODUCT NO. | W x D x H |
|-------------|-----------------|
| WMA404_ | 32" x 27" x 85" |
| WMA434_ | 38" x 27" x 85" |

COMPUTER MODEL



WMA4021

- 1 off-centered WM stand, 84"H
- 2 tiltable shelves
- 6 partial dividers
- 1 bottom shelf with ribbed mat
- 1 tiltable pan
- 1 document holder with arm
- 1 vertical adapter for power outlet strip and pneumatic connection
- 1 power outlet strip

| PRODUCT NO. | W x D x H |
|-------------|-----------------|
| WMA402_ | 32" x 27" x 85" |
| WMA432_ | 38" x 27" x 85" |

WM STAND

WMA



- Two widths available: 32" (28" c/c between uprights) and 38" (34" c/c between uprights)
- Three heights available: 36", 54" and 84"
- Centered and off-centered stands available
- The uprights have six fixing zones to minimize interference between components
- To order: Specify the width and model required according to the chart, [see page 209](#)

| PRODUCT NO. | HEIGHT | TYPE |
|-------------|--------|--------------|
| WMA5_0_ | 36" | Centered |
| WMA6_0_ | 36" | Off-centered |
| WMA1_0_ | 54" | Centered |
| WMA2_0_ | 54" | Off-centered |
| WMA3_0_ | 84" | Centered |
| WMA4_0_ | 84" | Off-centered |

REPLACEMENT HANDLE

WS74

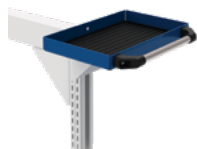


- Aluminum with plastic end caps
- Installs on the side of a WM stand
- Included with 54"H mobile WM stands
- Modern, attractive design

PRODUCT NO. _____
WS74-1202

SHELF FOR WM UPRIGHT

WM84



- Usable shelf area : 14"W x 8"D x 1"H
- Horizontal aluminum handle with plastic end caps, available for 36"H mobile WM stands only

| PRODUCT NO. | DESCRIPTION |
|-------------|--|
| WM84-081401 | With handle, for 36"H mobile stands |
| WM84-081402 | Without handle, for 36"H, 54"H and 84"H stands |

PROTECTIVE BUMPERS

WM92



- L-shaped bumper that screws into riveted nuts on a base with three machine screws
- Sold in kits of four

PRODUCT NO. _____
WM92-01

CASTERS

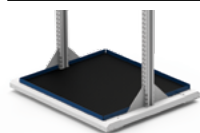
LB81 / LB84



- Three types of casters available: rigid, swivel and swivel with total-lock brake (on wheel and swivel)
- 4" casters: 440lb. load capacity; total height: 5 1/4"
- 6" casters: 1100lb. load capacity; total height: 7 1/2"
- Heavy-duty, non-marking polyurethane casters; Superior industrial quality
- Included with 36"H and 54"H mobile WM stands

BOTTOM SHELF

WM83



- Installs on the bottom of a WM stand
- Includes a resistant ribbed mat
- Dimensions: 26"W x 22 3/4"D and 32"W x 22 3/4"D (int. dim.)

| PRODUCT NO. | STRUCTURE |
|-------------|--------------|
| WM83-282701 | Centered |
| WM83-282702 | Off-centered |
| WM83-342701 | Centered |
| WM83-342702 | Off-centered |

DOCUMENT HOLDER

WM90



- Specially designed for WM stands
- Keeps paperwork and manuals accessible and organized

PRODUCT NO. _____
WM90-01

NOTE: All 28"W and 34"W multi-purpose upright accessories are compatible with WM stands AS LONG AS all security recommendations are followed, [see pages 164-171](#). For further information, please contact your customer service representative.