



ROUSSEAU METAL

YOUR COMPLETE SOLUTION



**COMMANDER
WAREHOUSE
EQUIPMENT LTD.**

PARTS & SERVICE
AUTOMOTIVE STORAGE EQUIPMENT
FOR YOUR CAR DEALERSHIP

SERVICE DEPARTMENT

**SERVICE ADVISOR
DESKS**

SERVICE ADVISOR DESKS

WELCOMING - PROFESSIONAL - MODERN

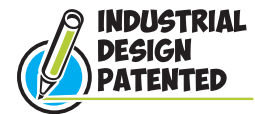


Rousseau's service advisor desks create a dedicated space for greeting customers. As well as its welcoming and contemporary looks, it has been designed to facilitate all tasks performed by a service advisor. This includes initial greeting, delivery of keys, explanation of work to be performed, work order planning, car preparation and payment. For all this and more, the service advisor desk excels and impresses both visitors and advisors.

- Spacious work surface including a cable grommet to keep the surface clear;
- Work surface and riser shelf have rounded fronts for a distinctive and welcoming look;
- Choice of models with or without cabinet (18"W x 27"D x 38"H) to meet the advisor's needs;
- Work surface and riser shelf options: stainless steel, gray laminate and wood;
- No visible cables;
- Sold assembled.



Oxford Dodge Chrysler (ON)



Layout options

Choose one or more fixed or mobile desks to meet the needs of your dealership. You can join fixed desks together in either a side by side or offset configuration. With a wide range of accessories available, you can build a truly personalized service advisor desk.

Mobile



Stationary (single)



Side by side



Offset





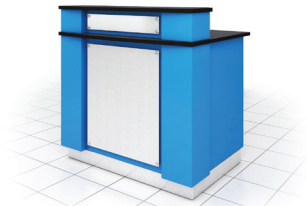
SERVICE ADVISOR DESKS

METICULOUS DESIGN, AN ORGANIZED WORKSPACE



OPTIONS

Stainless steel panel with or without personalization



Duotone



Desk top:

- Support for computer monitor
- Several types of top and riser shelf available

Below the work surface:

- Fixed shelf
- Waste and recycling containers
- Printer support
- Adjustable shelf
- Door with lock to secure personal belongings

Under the riser shelf:

- Power outlets and USB ports
- LED light

With or without cabinet:

- Multiple drawer heights available
- 12" drawer for file storage
- The drawer has a 100 lb load capacity and the total load capacity of the cabinet is 250 lb

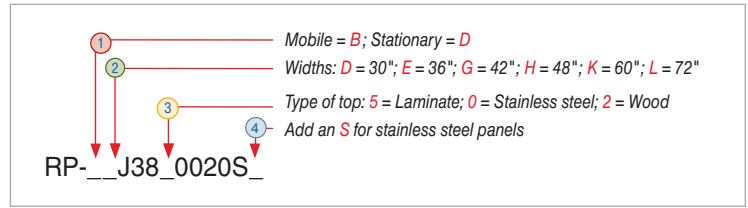
Fixed and mobile versions available

Note: To add accessories to preconfigured models, please contact Customer Service.

SERVICE ADVISOR DESKS

BUILD YOUR OWN

Follow the steps to order your own customized service advisor desk. By choosing the various options available, you can build a desk that fulfills your requirements and matches your brand image. You can choose your top, your finishing panels, and from six different widths for both mobile and fixed desks.



Complete the model number on pages 81 to 82 with the options below.

1

Mobile (B)



- 2" casters for moving the desk easily when required.
- Four casters are included for desks with two legs.
- Six casters are included for models with one leg and a cabinet.

Note: Side-by-side desks and offset desks cannot be mobile.

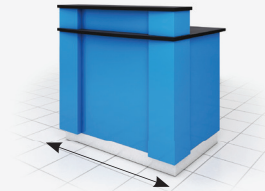
Stationary (D)



- Stainless steel bases come with leveling glides for easy leveling.
- Comes with four leveling glides, while 60" and 72" versions with cabinet come with five;
- Side-by-side and offset configurations are possible by adding the desk joining kit RP-K001S.

2

Widths: 30" (D) ; 36" (E) ; 42" (G) ; 48" (H) ; 60" (K) ; 72" (L)



3

Tops

Tops and riser shelves have rounded corners (visitor side).



Stainless steel (0)



Gray laminate (5)



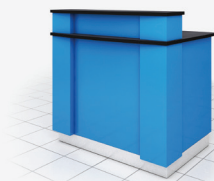
Wood (2)

Laminate and stainless steel versions have an aesthetic and durable black edging.

Wood adds a warm and distinctive look.

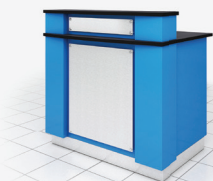
4

No panel



Note: No code to add.
 Base models come without a panel.

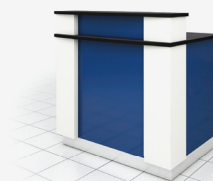
With stainless steel panel (S)



- With this option, you can personalize your desk by adding a logo or name.
- Note: Not available for the 30" wide version.

See page 85

For duotone



Simply specify your chosen colors when ordering. There is no code to add.

5

Accessories

See page 84

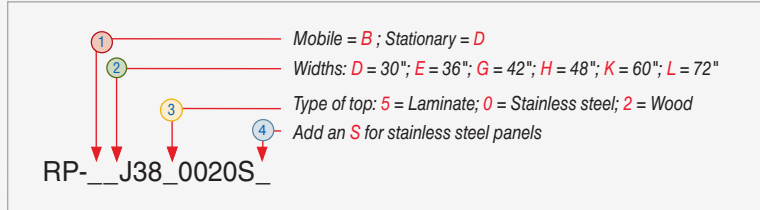
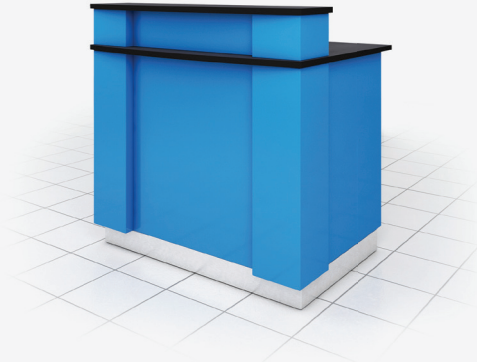
To join two or more service advisor desks together, side by side or offset, please order desk joining kit RP-K001S.

See page 83

Note: Side-by-side desks and offset desks cannot be mobile.



Front view for preconfigured models



Note 1: Only available for 48", 60" and 72" wide desks.

Note 2: The shelf width varies according to the desk width. 24" for a 48" desk; 36" for a 60" desk; 48" for a 72" desk.

Note 3: 48" desk = 24" double doors; 60" desk = 36" double doors; 72" desk = 48" double doors.

Note 4: Available in 30" only.

Note 5: Desks with doors cannot be mobile.

Back view



Basic Desk

- Riser shelf.

Model number to be completed:
RP-__J38_0020S_



Basic Desk with Monitor Support

- Riser shelf with 1 power outlet and 2 USB ports;
- Monitor support;
- LED Light;
- Full-width shelf;
- Waste and recycling containers.

Model number to be completed:
RP-__J38_0040S_



Desk with Cabinet

- Riser shelf;
- 18"W cabinet with 4 drawers: 1-4", 1-6", 1-8", 1-12".

Model number to be completed:
RP-__J38_002RS_
(Note 1)



Desk with Cabinet and Monitor Support

- Riser shelf with 1 power outlet and 2 USB ports;
- Monitor support;
- LED Light;
- 18"W cabinet with 4 drawers: 1-4", 1-6", 1-8", 1-12";
- Shelf;
- Waste and recycling containers.

Model number to be completed:
RP-__J38_004RS_
(Note 1 and 2)

SERVICE ADVISOR DESKS



Desk with Cabinet (drawers and roll-out shelf)

- Riser shelf;
- 18"W cabinet with 2 drawers: 1-3", 1-12" and 1 roll-out shelf.

Model number to be completed:
RP-__J38_006RS_
(Note 1)



Desk with Cabinet (drawers and roll-out shelf) and Monitor Support

- Riser shelf with 1 power outlet and 2 USB ports;
- Monitor support;
- LED Light;
- 18"W cabinet with 2 drawers: 1-3", 1-12" and 1 roll-out shelf;
- Shelf;
- Waste and recycling containers.

Model number to be completed:
RP-__J38_008RS_
(Note 1 and 2)



Desk with Cabinet (drawers and roll-out shelf), Monitor Support and secure storage under the work surface

- Riser shelf with 1 power outlet and 2 USB ports;
- Monitor support;
- LED light;
- 18"W cabinet with 2 drawers: 1-3", 1-12" and 1 roll-out shelf;
- Adjustable shelf;
- Shelf;
- Door with lock to secure personal belongings.

Model number to be completed:
RP-D_J38_012RS_
(Note 1, 2, 3 and 5)



Desk with Cabinet and secure storage under the work surface

- Riser shelf with 1 power outlet and 2 USB ports;
- LED light;
- 18"W cabinet with 4 drawers: 1-4", 1-6", 1-8", 1-12";
- Adjustable shelf;
- Shelf;
- Door with lock to secure personal belongings.

Model number to be completed:
RP-D_J38_010RS_
(Note 1, 2, 3 and 5)



Desk with Printer Shelf

- Riser shelf with 1 power outlet and 2 USB ports;
- Power feed panel under the work surface;
- Shelf including a printer support;
- LED light.

Model number to be completed:
RP-_DJ38_0060S_
(Note 4)



Double Service Advisor Desks



Desks with Cabinets and Monitor Supports

- Gray laminate tops;
- 2 riser shelves with 1 power outlet and 2 USB ports each;
- 2 monitor supports;
- 2 LED lights;
- 2-18"W cabinets with 4 drawers each: 1-4", 1-6", 1-8", 1-12".
- 2-24"W shelves;
- Waste and recycling containers;
- Stainless steel finishing panels.

Product #

RP-C252004SS

This model number would be RP-DHJ385004RSS twice on pages 81 plus a desk joining kit RP-K001S.

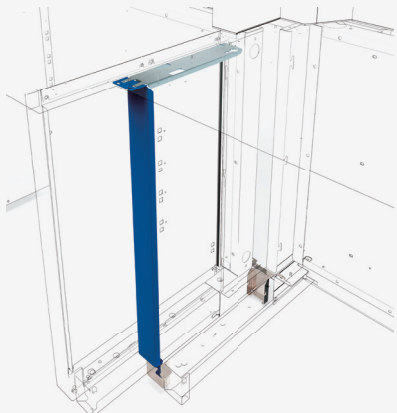
Desk with Cabinet and Monitor Support combined with Desk with Printer Shelf

- Wood tops;
- 2 riser shelves with 1 power outlet and 2 USB ports each;
- Monitor support;
- 2 LED lights;
- 18"W cabinet with 4 drawers: 1-4", 1-6", 1-8", 1-12".
- 24"W shelf;
- Waste and recycling containers;
- Shelf including a printer support;
- Power feed panel under the worksurface;
- Stainless steel finishing panels.

Product #

RP-C221002SS

This model number is effectively model RP-DHJ382004RSS and RP-DDJ3820060S on pages 81 and 82, plus a desk joining kit RP-K001S.



Desk Joining Kit

- For joining two or more fixed service advisor desks together;
- Suitable for side-by-side (linear) and offset configurations;
- In offset configurations, the offset distance between desks is 8";
- One kit per additional desk;
- Includes finishing strips and attachment bars.

Product #

RP-K001S

Note: Side-by-side desks and offset desks cannot be mobile.

SERVICE ADVISOR DESKS

Accessories

Waste and recycling containers



	Product #
Recycling Container	RP46-01
Waste Container	RP46-02

Door with lock to secure personal belongings



Product #
RP48

Adjustable shelf



Product #
RP41

Printer shelf



Product #
RP43-2121

Power feed panel under the work surface



Product #
RP95

Phone and network cable kit



Product #
RP95-01

Wiring management kit



Product #
RP95-02

Cable management kit

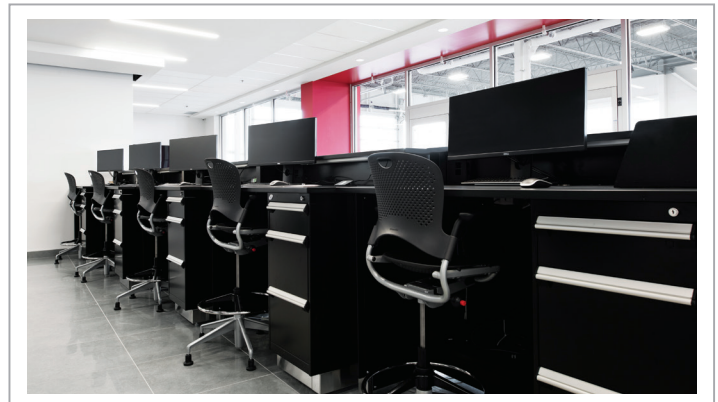


Product #
RP95-03

Note: To add accessories to preconfigured models, please contact Customer Service.



Oxford Dodge Chrysler (ON) - Front view



Oxford Dodge Chrysler (ON) - Rear view