



ROUSSEAU METAL

YOUR COMPLETE SOLUTION



**COMMANDER
WAREHOUSE
EQUIPMENT LTD.**

PARTS & SERVICE
AUTOMOTIVE STORAGE EQUIPMENT
FOR YOUR CAR DEALERSHIP

**PARTS DEPARTMENT
SERVICE
COUNTERS**

MAXIMIZE YOUR SERVICE



In order to provide rapid and efficient service to your internal and external clients, make sure you have the most asked-for parts on hand, directly at the service counter! Adding drawers under the work surface provides high-density storage. You can also reach more parts without having to move. Moreover, we suggest that you combine shelves and drawers to maximize the efficiency of the storage for parts with a high turnover.

Rousseau service counters have been designed to be welcoming for your customers while also providing an efficient and ergonomic workspace. You will love the distinctive look of our new corner service counters. With an attractive finish and the option to personalize stainless steel front panels, you can proudly display your logo and highlight your brand image. See page 85 for more details.

Corner service counter, configuration 1830: 15 drawers

This counter allows you to keep frequently used parts within arm's reach. With a 24" wide leg space, it is easy to work at the counter or store the chair as needed.

- Left bank (24"W):
 - 3- 4" drawers
 - 1- 6" drawer
 - 1- 8" drawer
- Right bank (2 x 36"W):
 - 3-4" drawers x 2 = 6- 4" drawers
 - 1- 6" drawer x 2 = 2- 6" drawers
 - 1- 8" drawer x 2 = 2- 8" drawers
- Center section (24"W):
 - Leg



D x H	Type of Top	
	Stainless Steel	Painted Steel
30" x 36"	RS-C096S	RS-C096P

Center section only, including the corner top

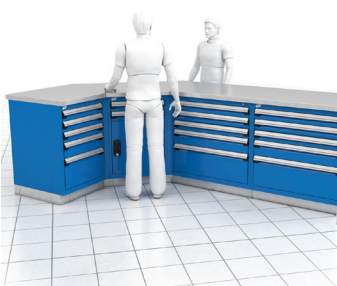


Stainless Steel	Painted Steel
RS-J18303420S	RS-J18303420P

Corner service counter, configuration 1830: 17 drawers, 1 shelf

With multiple drawers of different dimensions and a secure storage space with door, you can store high-demand parts whatever their size and shape.

- Left bank (24"W):
 - 3- 4" drawers
 - 1- 6" drawer
 - 1- 8" drawer
- Right bank (2 x 36"W):
 - 3- 4" drawers x 2 = 6- 4" drawers
 - 1- 6" drawer x 2 = 2- 6" drawers
 - 1- 8" drawer x 2 = 2- 8" drawers
- Center bank (24"W):
 - 2- 4" drawers
 - 1- 18" door
 - 1- shelf level



D x H	Type of Top	
	Stainless Steel	Painted Steel
30" x 36"	RS-C094S	RS-C094P

Center section only, including the corner top



Stainless Steel	Painted Steel
RS-J18303418S	RS-J18303418P

Important: The corner workstation must be anchored to two cabinets of the same height and depth, one on each side (RA30 or RA35).



Our corner service counters are available in configurations 0030, 0630, 1230 and 1830. Please contact customer service for more details.

SERVICE COUNTERS



Counter Cabinets: 14 drawers, 3 shelves

This counter will be of great use in your parts department to store your small to medium parts while being used as a customer service counter.

- Left bank (R5AEE-3816):
2 - 3" drawers
7 - 4" drawers
- Middle bank (R5AEE-3818):
2 - adjustable shelves
1 - bottom shelf
- Right bank (R5AEE-3820):
3 - 6" drawers
2 - 8" drawers

Whole Unit W x D x H	Type of Top					
	No Top	Stainless Steel	Painted Steel	Lam. Wood	Plastic Lam.	Acrylic / PVC
108" x 24" x 44"	R5XSE-1001	R5XSE-1002	R5XSE-1003	R5XSE-1004	R5XSE-1005	R5XSE-1006



Counter Cabinets: 1 drawer, 3 shelves and 2 roll-out shelves

Including two roll-out shelves, this service counter will be of great use to you when handling and storing heavy parts. Moreover, the drawer with lock can be very useful to store valuable items or even insert the cashier drawer.

- Left bank (R5AEE-3404):
2 adjustable shelves
1 bottom shelf
- Right bank (R5AEE-3402):
1 - 3" drawer
2 roll-out shelves

Whole Unit W x D x H	Type of Top					
	No Top	Stainless Steel	Painted Steel	Lam. Wood	Plastic Lam.	Acrylic / PVC
72" x 24" x 40"	R5XLE-1101	R5XLE-1102	R5XLE-1103	R5XLE-1104	R5XLE-1105	R5XLE-1106



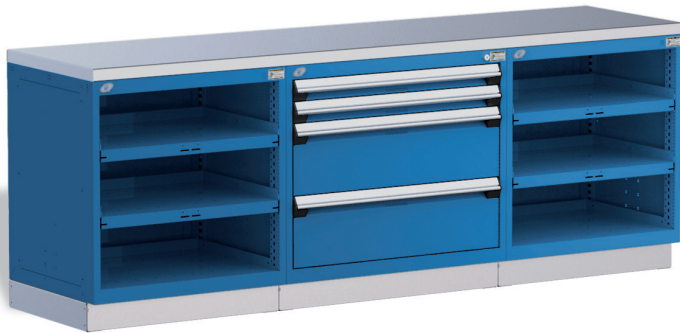
Counter Cabinets: 19 drawers, 1 door

This service counter has been designed to satisfy all of your storage needs for high-volume parts, while enabling you to serve your clients.

- Left bank (R5KKE-3816):
3 - 3" drawers
2 - 4" drawers
2 - 5" drawers
1 - 6" drawer
1 - 7" drawer
1 - 20" door
- Right bank (R5KHE-3820):
2 - 3" drawers
1 - 4" drawers
4 - 6" drawers
1 - 10" drawer
1 - 14" drawer

Whole Unit W x D x H	Type of Top					
	No Top	Stainless Steel	Painted Steel	Lam. Wood	Plastic Lam.	Acrylic / PVC
108" x 24" x 44"	R5XSE-1201	R5XSE-1202	R5XSE-1203	R5XSE-1204	R5XSE-1205	R5XSE-1206

SERVICE COUNTERS



Counter Cabinets: 4 drawers, 6 shelves

Perfect for storing small items and parts, this counter includes several drawers and shelves to give you storage that is tailored to your needs.

- Left bank (R5ADE-3004):
2 adjustable shelves
1 bottom shelf
- Middle bank (R5AEE-3020):
2 - 3" drawers
2 - 10" drawers
- Right bank (R5ADE-3004):
2 adjustable shelves
1 bottom shelf

Whole Unit W x D x H	Type of Top					
	No Top	Stainless Steel	Painted Steel	Lam. Wood	Plastic Lam.	Acrylic / PVC
96" x 24" x 36"	R5XRE-1201	R5XRE-1202	R5XRE-1203	R5XRE-1204	R5XRE-1205	R5XRE-1206



Storage Unit with Work Surface: 6 drawers

This workstation provides high-density storage, bulky storage and a work surface. You have everything you need at your disposal!

- 2 - 4" drawers
- 3 - 6" drawers
- 1 - 8" drawer

W x D x H	Product #
72" x 24" x 87"	R5XEE-4003

Note: Service counter only available with a laminated hardwood top (SR90) made to fit between 2 shelving units.

