



# ROUSSEAU METAL

## YOUR COMPLETE SOLUTION



**COMMANDER  
WAREHOUSE  
EQUIPMENT LTD.**

**PARTS & SERVICE**  
AUTOMOTIVE STORAGE EQUIPMENT  
FOR YOUR CAR DEALERSHIP

**PARTS DEPARTMENT  
MEDIUM  
PARTS STORAGE**

# MEDIUM PARTS STORAGE

## MUCH MORE THAN A SIMPLE SHELVING



Our Spider® Shelving system is perfect for most requested items, special orders, as well as parts under warranty. Its unique design guarantees easy configuration and easy to add accessories.

- The only system that allows you to alternate the use of shelves (medium parts) and steel decking (large parts);
- Our common post reduces the number of posts needed by 25%, leaving more space for storage;
- When planning tomorrow's needs today make Spider® Shelving the foundation for your multi-level shelving system.



See pages 102-103

## Shelving for Medium Parts

- Adding drawers gives you a combined storage system that allows you to store both small and bulky parts;
- Box type shelves adjust at every 1" c/c.

See pages 88-89



SRP0142



SRP0144

W x D x H	# of Useable Shelves	Open	Closed
36" x 18" x 75"	7	SRP0101	SRP0103
36" x 24" x 75"	7	SRP0102	SRP0104
36" x 18" x 87"	8	SRP0111	SRP0113
36" x 24" x 87"	8	SRP0112	SRP0114
36" x 18" x 99"	9	SRP0121	SRP0123
36" x 24" x 99"	9	SRP0122	SRP0124
48" x 18" x 75"	7	SRP0131	SRP0133
48" x 24" x 75"	7	SRP0132	SRP0134
48" x 18" x 87"	8	SRP0141	SRP0143
48" x 24" x 87"	8	<b>SRP0142</b>	<b>SRP0144</b>
48" x 18" x 99"	9	SRP0151	SRP0153
48" x 24" x 99"	9	SRP0152	SRP0154

## Shelving with Sloped Shelves

- The 15-degree angle provides excellent visibility of stored items and is idea for gravity flow storage.
- Includes a heavy-duty front edge to keep stored items in place.
- Sloped shelves and non-slope SH20 BOX shelves can be combined in the same unit.

Open



SRE1T-EE750501

Closed



SRE2T-EE750501

FIFO

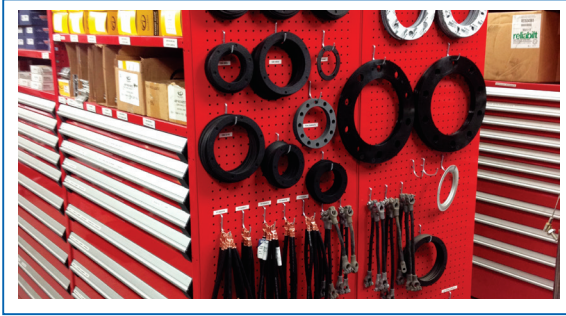


SRK1F-EE750501

W x D x H	# of Useable Shelves	Open	Closed	FIFO
36" x 18" x 75"	5	SRE1T-EC750501	SRE2T-EC750501	SRK1F-EC750501
36" x 24" x 75"	5	<b>SRE1T-EE750501</b>	<b>SRE2T-EE750501</b>	<b>SRK1F-EE750501</b>
36" x 18" x 87"	6	SRE1T-EC870601	SRE2T-EC870601	SRK1F-EC870601
36" x 24" x 87"	6	SRE1T-EE870601	SRE2T-EE870601	SRK1F-EE870601
36" x 18" x 99"	6	SRE1T-EC990601	SRE2T-EC990601	SRK1F-EC990601
36" x 24" x 99"	6	SRE1T-EE990601	SRE2T-EE990601	SRK1F-EE990601
48" x 18" x 75"	5	SRE1T-HC750501	SRE2T-HC750501	SRK1F-HC750501
48" x 24" x 75"	5	SRE1T-HE750501	SRE2T-HE750501	SRK1F-HE750501
48" x 18" x 87"	6	SRE1T-HC870601	SRE2T-HC870601	SRK1F-HC870601
48" x 24" x 87"	6	SRE1T-HE870601	SRE2T-HE870601	SRK1F-HE870601
48" x 18" x 99"	6	SRE1T-HC990601	SRE2T-HC990601	SRK1F-HC990601
48" x 24" x 99"	6	SRE1T-HE990601	SRE2T-HE990601	SRK1F-HE990601



# MEDIUM PARTS STORAGE



## Shelving Accessories

With our shelving accessories, you can take full advantage of all available space and also resolve your storage challenges.

The unique shape of the Spider®, post is a Rousseau Metal inc. trademark



### Side Perforated Panel

With the perforated panel, you can make the most of unused space at the end of aisles.

- It is ideal for belting or any part that needs to be hung;
- The holes are spaced 1" c/c, giving you many possibilities when configuring your hooks;
- Used with the light-duty hooks;
- 200 lb. capacity per panel.

Product #	D x H
SH38-18075	18" x 75"
SH38-18087	18" x 87"
SH38-24075	24" x 75"
SH38-24087	24" x 87"



### Full Height Heavy-Duty Side Utility Panel

With the side utility panel you can make the most of unused space at the end of aisles.

- Compatible with light-duty and heavy-duty hooks WM9F, WM9G, WM9H, WM9J, WM9A and WM9B hooks;
- Also compatible with WM9C, WM9D, WM9L, WM9N, WM9M supports and WM21 tiltable shelf;
- The holes are spaced 1" c/c, giving you many possibilities when configuring your hooks;
- 500 lb. capacity per panel.

Product #	D x H
SH69-1875	18" x 75"
SH69-1887	18" x 87"
SH69-2475	24" x 75"
SH69-2487	24" x 87"



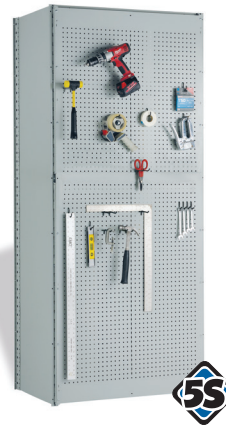
### Partial Height Back or Side Utility Panels

With the utility panel, you can store parts that you need close by and make the most of the space available on the sides or inside the shelving.

- Compatible with light-duty and heavy-duty hooks WM9F, WM9G, WM9H, WM9J, WM9A and WM9B hooks;
- Compatible with WM9C, WM9D, WM9L, WM9N, WM9M supports and WM21 tiltable shelf.

Product #	Type	W x H
SH67-3614	Back	36" x 14"
SH67-3620	Back	36" x 20"
SH67-3632	Back	36" x 32"
SH67-4814	Back	48" x 14"
SH67-4820	Back	48" x 20"
SH67-4832	Back	48" x 32"

Product #	Type	D x H
SH68-1814	Side	18" x 14"
SH68-1820	Side	18" x 20"
SH68-1832	Side	18" x 32"
SH68-2414	Side	24" x 14"
SH68-2420	Side	24" x 20"
SH68-2432	Side	24" x 32"



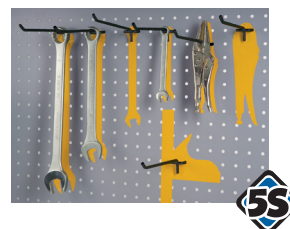
### Perforated Panel for Back of Shelving Unit

Panel allows for use of space on the back of shelving units.

- 2 versions available; retrofit (SR39) or structural (SH39);
- Perforations at every 1" c/c allow for layout flexibility;
- Compatible with light-duty hooks WM9F, WM9G, WM9H, WM9J and WM9L, WM9N and WM9M tool supports.

Product #	D x H
S_39-3639	36" x 39"
S_39-3651	36" x 51"
S_39-4839	48" x 39"
S_39-4851	48" x 51"

Complete the numbers with: **R** for retrofit and **H** for structural.



### Vinyl Rub-on Identification Decal

This self-adhesive film allows you to easily identify where tools are to be positioned on the panel. (SH38 / SR39 / SH39 / SH69 / SH67 / SH68).

- The contrasting color helps you to quickly locate your tools and to see if any tools are missing, and which ones are missing;
- Also compatible with the Wall Panel System.

Product #	W x L
WM91-01J	2' x 8'

# MEDIUM PARTS STORAGE



## Heavy-Duty Hooks

Can be used to store various types of parts and tools adequately on the utility panels system (SH67, SH68 and SH69).

- Capacity: 50 lb. distributed evenly on each hook;
- Available in a square or round shape.



Product #	Type of Hook	Length
WM9A-06	Square	6"
WM9A-12	Square	12"
WM9B-06	Round	6"
WM9B-12	Round	12"



## Support for Cans

Can be used to organize and store various aerosol cans.

- Clips onto SH67, SH68 or SH69 panels;
- Also suitable for beverage cans;
- The 6" wide model can be used to store 2 cans (standard sizes) and the 15" wide model can contain 5 cans.



Product #	W x D x H
WM9D-06	6" x 3" x 4"
WM9D-15	15" x 3" x 4"



## Support for Plastic Bins

Facilitates the integration and management of small parts in a "5S" storage system.

- Clips onto SH67, SH68 or SH69 panels;
- Can be used to include plastic bins (RG20).



Product #	W x H
WM9C-06	6" x 3"
WM9C-15	15" x 3"



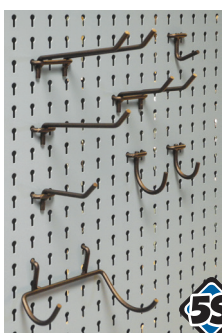
## Tiltable Shelf

Designed to support parts, plastic bins and boxes.

- The shelf can be angled at 15° to easily find what you're looking for;
- The shelf is reversible and its edge may serve as a back stop for plastic bins or binders.



Product #	W x D
WM21-1308	13" x 8"
WM21-1312	13" x 12"
WM21-1508	15" x 8"
WM21-1512	15" x 12"
WM21-3108	31" x 8"
WM21-3112	31" x 12"



## Light-Duty Hooks

Our hooks can be used to store many different parts, tools and accessories.

- They are compatible with most panels currently on the market (holes are 1/4" in diameter), in addition to Rousseau perforated panels (WM53, SH38, SR39 and SH39) and utility panels (SH67, SH68, SH69, RC93 and RC94);
- Also compatible with the Wall Panel System;
- Color: black.

See page 109



Product #	Type / Pack of	Dimensions
WM9F-150	Straight Arm Hooks / 20	1 1/2" D
WM9G-150	Single Loop Hooks / 20	1 1/2" diameter
WM9G-200	Single Loop Hooks / 20	2" diameter
WM9H-03	Double Back Single Hooks / 10	3" D
WM9H-05	Double Back Single Hooks / 10	5" D
WM9J-03	Double Back Double Hooks / 10	3" D
WM9J-05	Double Back Double Hooks / 10	5" D
WM9L-01	Drill Holder / 1	5" W x 3 1/2" D
WM9N-01	Screwdriver Holder / 1	9" W x 1 1/2" D x 2" H
WM9N-02	Screwdriver Holder / 2	9" W x 3 3/16" D x 2" H
WM9M-01	Plier Holder / 1	9" W x 2 1/2" D x 2" H



## Back Louvered Panel or Side Louvered Panel for Plastic Bins

With the louvered panel, you can store parts that you need close by and make the most of the space available on the sides or inside shelving.

- The panels can be used for hanging plastic bins RG20 and are compatible with all plastic bins equipped with a hanging lip that are available on the market.

Product #	Type	W x H
SH65-3614	Back	36" x 14"
SH65-3620	Back	36" x 20"
SH65-3632	Back	36" x 32"
SH65-4814	Back	48" x 14"
SH65-4820	Back	48" x 20"
SH65-4832	Back	48" x 32"

Product #	Type	D x H
SH66-1814	Side	18" x 14"
SH66-1820	Side	18" x 20"
SH66-1832	Side	18" x 32"
SH66-2414	Side	24" x 14"
SH66-2420	Side	24" x 20"
SH66-2432	Side	24" x 32"



# MEDIUM PARTS STORAGE



## Shelf Divider

Shelf divider is utilized to subdivide shelves and stored items.

- The dividers are installed without tools and are easily reconfigured.

Product #	Type	D x H
SH50-1809	Shelf Divider	18" x 9"
SH50-1815	Shelf Divider	18" x 15"
SH50-2409	Shelf Divider	24" x 9"
SH50-2415	Shelf Divider	24" x 15"
SH52-1806	Partial Divider	13 1/8" D for 18" D shelves
SH52-2406	Partial Divider	19 1/8" D for 24" D shelves



## Spool Support

The design allows for pivoting of the bar to facilitate changing spools.

- The bars have a 50 lb. capacity and are 3/4" in diameter (compatible with most spools on the market).

Product #	# of Rails	W x D
SH72-3618-01	1	36" x 18"
SH72-3618-02	2	36" x 18"
SH72-3624-01	1	36" x 24"
SH72-3624-02	2	36" x 24"
SH72-4818-01	1	48" x 18"
SH72-4818-02	2	48" x 18"
SH72-4824-01	1	48" x 24"
SH72-4824-02	2	48" x 24"



## LED Light for Spider® Shelving

- Eliminates shaded areas between shelves.
- Can be installed under shelves;
- Casts brighter light than fluorescent tubes and is more energy efficient.

Product #	Fits on
SH95-01	30" or 36" W shelves
SH95-02	42" or 48" W shelves



## Label Holder for Shelf

It is available magnetic or self-stick and has a wide surface so it adheres well to the shelf.

Note: Paper strips are available in packs of 200 (RG53).

Product #	Type	W x H
SH82-600	Magnetic Label Holder	6" x 1"
SH81-36	Self-Adhesive Label Holder	36" x 1"
SH81-48	Self-Adhesive Label Holder	48" x 1"



## Leveling Glides Kit

Serves to adjust the height of the Spider® shelving unit 1 1/4" to 2 1/8" on uneven floor surfaces.

- Maximum capacity of 750 lb. / glide;
- Restrictions:
  - Offered for 99" high shelving and less
  - Compatible with SR posts and SR uprights only
  - Not compatible with (RF32 / RF36) drawers, (RF41 / RF45) roll-out shelves, the SH28 base and the SH posts and SH uprights;
- Sold in pairs.

Product #
SR49-01



## Flipper Door for Spider® Shelving

Perfect for safe storage of small quantities and for storing confidential files.

- The 14" H door allows storage of folders with tabs. The 16" H door will allow you to store binders;
- Order by adding the door height to the product #: **14", 16", 17" or 18"**.

Product #	W x D x H
SH85-3618_L3	36" x 18"
SH85-3624_L3	36" x 24"
SH85-4818_L3	48" x 18"
SH85-4824_L3	48" x 24"



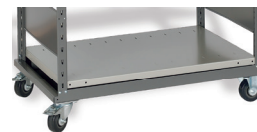
## Plastic Bin

Our plastic bin makes storing, moving, and inventory of small parts easier.

- The edges are angled 45° for identifying contents and easy removal of parts;
- Compatible with louvered panels SH65 / SH66 and support for plastic bins WM9C.

Note: Partitions and dividers also available (RG22 / RG24).

Product #	W x D x H
RG20-040302	4" x 3" x 2"
RG20-040303	4" x 3" x 3"
RG20-060302	6" x 3" x 2"
RG20-060303	6" x 3" x 3"
RG20-060602	6" x 6" x 2"
RG20-060603	6" x 6" x 3"



## Mobile Shelving

Preconfigured models of mobile shelving units are shown here.

- Models include one shelving (uprights, braces and box shelves), the mobile base for Spider® shelving and 4" casters (2 swivels with total-lock brake system and 2 rigids);
- All models are quick and easy to assemble and can be disassembled when not in use;
- Capacity: 1000 lb. per base.

Note: 6 Useable Shelves

W x D x H	Open
36" x 18" x 63"	SRE4001M
36" x 24" x 63"	SRE4002M
36" x 24" x 75"	<b>SRE4003M</b>
48" x 18" x 63"	SRE4007M
48" x 24" x 63"	SRE4008M
48" x 24" x 75"	SRE4009M



# MEDIUM PARTS STORAGE



SRE3205

## Doors

Designed for shelving with or without drawers, Rousseau doors store equipment safely and protect it from dirt.

- Ideal for expensive parts, such as car radios;
- Doors open 180° with a locking mechanism integrated into the handle;
- Complete the product number by choosing the desired height: 39", 41", 51", 53", 63", 75", 87" or 99".

Product #	Width
SH41-36 L3	36"
SH41-48 L3	48"



SRE3204

## Polycarbonate Doors

Designed for shelving with or without drawers, Rousseau doors store equipment safely and protect it from dirt.

- Ideal for expensive parts, such as promotional items;
- Doors with polycarbonate panels ensure you can see contents;
- Excellent impact resistance;
- Doors open 180° with a locking mechanism integrated into the handle;
- Complete the product number by choosing the desired height: 39", 41", 51", 53", 63", 75", 87" or 99".

Product #	Width
SH43-36 L3	36"
SH43-48 L3	48"



R5SEE-871813

## Stacked Solid Doors

Installed in the top part of Spider® Shelving, they are designed to be installed over a bank of drawers.

- Ideal for storage and keeping work areas tidy;
- They are perfect for storing expensive parts or parts less in demand;
- Doors open fully on 180° hinges, allowing shelving contents to be visible and accessed easily;
- Sturdy handle includes a lock;
- To know the possible dimensions, see tech sheet S64



R5SEE-871815

## Stacked Polycarbonate Doors

Installed in the top part of Spider® Shelving, they are designed to be installed over a bank of drawers.

- Ideal for storage and keeping work areas tidy;
- Polycarbonate surface allows shelving contents to remain visible and has excellent impact resistance;
- Ideal for storing expensive parts or slow-moving inventory;
- Doors open fully on 180° hinges, allowing shelving contents to be visible and accessed easily;
- Sturdy handle includes a lock;
- To know the possible dimensions, see tech sheet S64.

**Important:** Refer to tech sheet S64 Spider® Shelving Doors-Layouts and dimensions for recommended configurations and possible combinations.

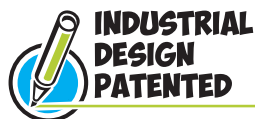
## Doors' Advantages



Door opens by turning handle left or right.



Door closes with a simple push.



R5SEE-871807



R5SEE-871811