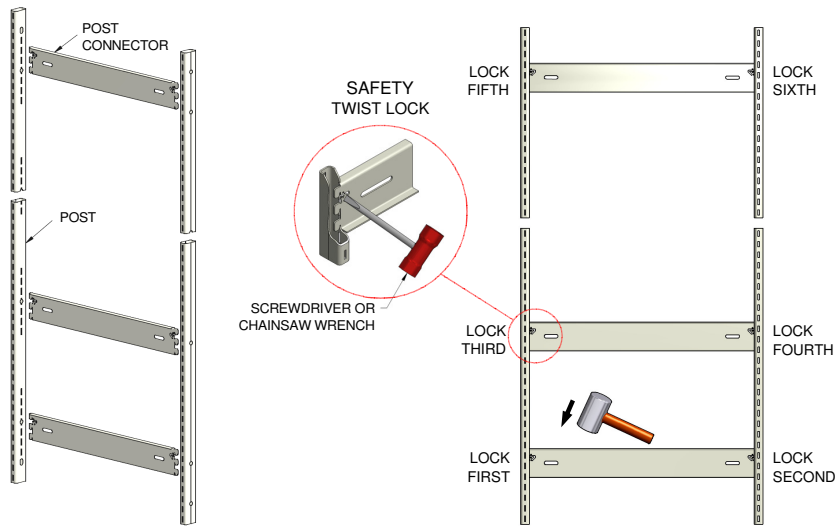


WARNING: PLEASE FOLLOW ASSEMBLY INSTRUCTIONS. DO NOT USE SHELVES OR CONNECTORS WITH COMPONENTS OTHER THAN E-Z-RECT PRODUCTS.



STEP ONE

FRAME ASSEMBLY

STEP TWO

Place post flat on the ground so that Post Connector slots are on the inside and the seam is on the outside. Post Connectors are adjustable as illustrated on the back page of the assembly instructions and are required for end frame assembly.

Starting from the bottom tap in one side of the Post Connector and LOCK IMMEDIATELY. Then tap in and lock the other side. The post will have to be spread lightly as you work your way up the post. Use a 1/4" or a 3/8" screwdriver or chainsaw wrench to lock connectors. Assembly time is approximately 1 to 2 minutes per 84" (2134mm) frame.

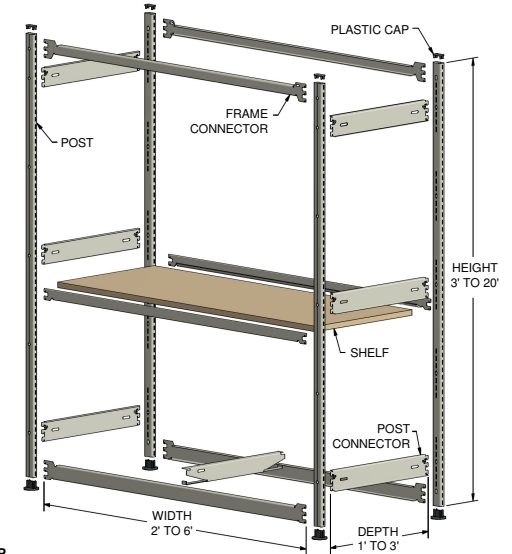
Load Capacities	Maximum Evenly Distributed Static Load Per Pair of Connectors						
	36" 0.91m	39 1/2" 1.00m	48" 1.22m	60" 1.52m	66" 1.68m	72" 1.83m	
4 Shelf Clips & one Metal 20ga. Shelf	350 lb 159 kg	290 lb 132 kg	200 lb 91 kg	--	--	--	
TFC	390 lb 177 kg	350 lb 159 kg	290 lb 132 kg	191 lb 87 kg	--	--	
TBC	600 lb 272 kg	550 lb 249 kg	500 lb 227 kg	--	--	--	
TWB	700 lb 318 kg	675 lb 306 kg	650 lb 295 kg	550 lb 249 kg	450 lb 204 kg	375 lb 170 kg	
TWB with one Combination Tie Bar	975 lb 442 kg	950 lb 431 kg	925 lb 420 kg	900 lb 408 kg	800 lb 363 kg	700 lb 318 kg	

Please note load capacities & components subject to change without notice.

SAFE WORKING LOADS OF UP TO 7,000 LBS (3,175 kg) PER PAIR OF POSTS OR BAY OF SHELVING.
SAFETY FACTOR OF 1.66 TO 1.00 BASED ON MINIMUM YIELD STATIC LOADING ONLY.
PLEASE CONTACT THE FACTORY FOR CAPACITIES NOT SHOWN IN CHART.

ONLY FOUR BASIC COMPONENTS

1. Post
2. Post Connector
3. Frame Connector.
4. Shelf (metal or particle board)

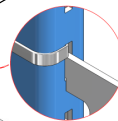


BLACK PLASTIC CAP



SHELF CLIPS

4 Required per shelf level (2 Right Hand & 2 Left Hand) Used for metal shelves.



CONNECTOR LOCKING CLIP

Simply snap in connector locking clip where/when required to lock connector.



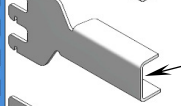
TFCV FRAME CONNECTOR

Use with particleboard shelves. Available lengths: 36" (0.91m), 39 1/2" (1.00m), 48" (1.22m).



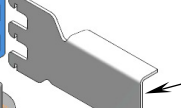
TFCL FRAME CONNECTOR

Use with metal shelves. Available lengths: 36" (0.91m), 39 1/2" (1.00m), 48" (1.22m).



TBC FRAME CONNECTOR

Use with metal or particleboard shelves. Available lengths: 36" (0.91m), 39 1/2" (1.00m), 48" (1.22m).



TWB FRAME CONNECTOR

Use with metal or particleboard shelves and as a kickplate. Available lengths: 36" (0.91m), 39 1/2" (1.00m), 48" (1.22m), 60" (1.52m), 66" (1.68m), 72" (1.83m).

BLACK PLASTIC FLOOR PROTECTOR



BLACK PLASTIC STACKABLE SHIM



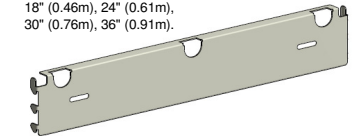
ZINC PLATED FLOOR PROTECTOR



ZINC PLATED SHIM

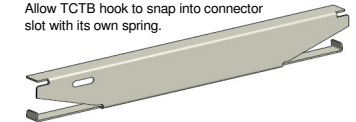
TRB GARMENT ROD SUPPORT

Use to support 1" O.D. galvanized garment hang rod. Available depths: 12" (0.30m), 15" (0.38m), 18" (0.46m), 24" (0.61m), 30" (0.76m), 36" (0.91m).



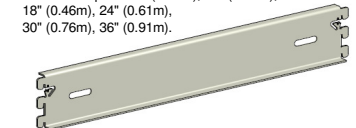
COMBINATION TIE BARS

Use with TWB connectors. Available depths: 18" (0.46m), 24" (0.61m), 30" (0.76m), 36" (0.91m). Allow TCTB hook to snap into connector slot with its own spring.



POST CONNECTORS

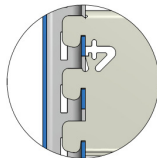
Use to join posts (refer to chart for quantity). Available depths: 12" (0.30m), 15" (0.38m), 18" (0.46m), 24" (0.61m), 30" (0.76m), 36" (0.91m).



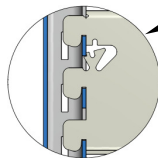
CAUTION - POST CONNECTOR MUST BE LOCKED FOR SAFETY



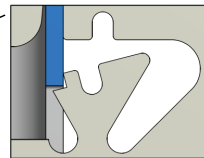
NOT LOCKED



LOCKED

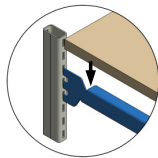


TAB FULLY LOCKED

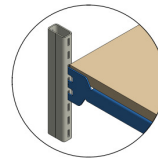


SHELF PLACEMENT - LAY THE SHELF ON TOP OF FRAME CONNECTOR

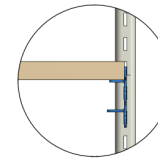
ON TOP



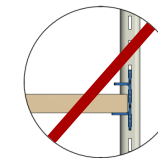
PLACED



CORRECT



INCORRECT



e-z-rect®

TRIM-LINE®

E-Z-RECT MANUFACTURING LTD.

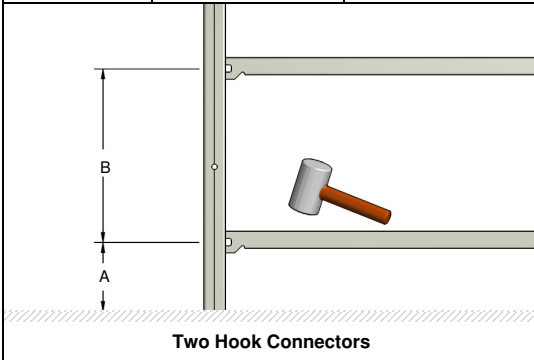
Head Office: North Vancouver, P: 604 929 5461
Email: sales@ezrect.ca Web: www.ezrect.ca

Eastern Sales: Mississauga, P: 905 564 0890
Email: torontosales@ezrect.ca Web: www.ezrect.ca

UK Sales: Oxon, P: 01993 779494
Email: mail@ezrshelving.com Web: www.ezrshelving.com

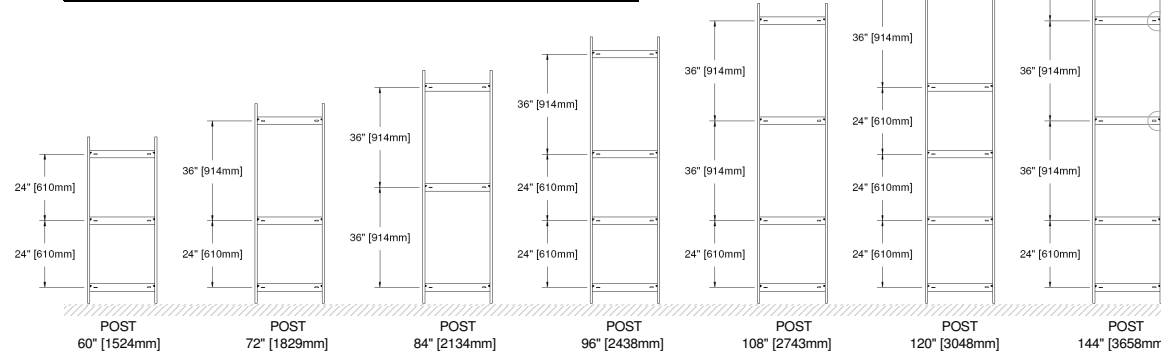
ALLOWABLE SPACING BETWEEN FRAME CONNECTORS

	Light to Medium Loads up to 3,000lb (1,361kg) or up to 24" (610mm) in Depth	
	Two Hook	Three Hook
Dimension A Not to Exceed	12" (305mm)	20" (508mm)
Dimension B Not to Exceed	36" (914mm)	48" (1219mm)



NUMBERS OF POST CONNECTORS REQUIRED

Height of Post		Light to Medium Loads up to 3,000lb (1,361kg) or up to 24" (610mm) in Depth
Inches	Metric	
24" to 36"	610mm to 914mm	2
48" to 84"	1219mm to 2134mm	3
96" to 108"	2438mm to 2743mm	4
120" to 144"	3048mm to 3658mm	5

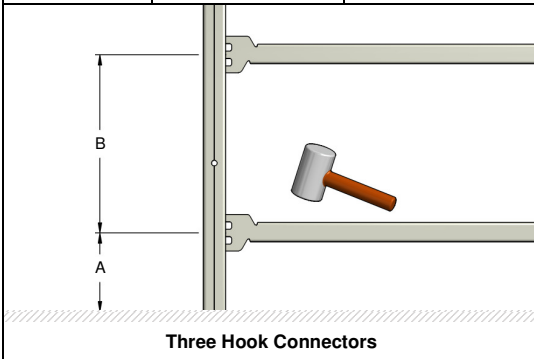


POST CONNECTOR TABS MUST BE LOCKED IN PLACE FOR SAFETY, TYP.

USE THREE MIDDLE POST CONNECTOR SLOTS, TYP.

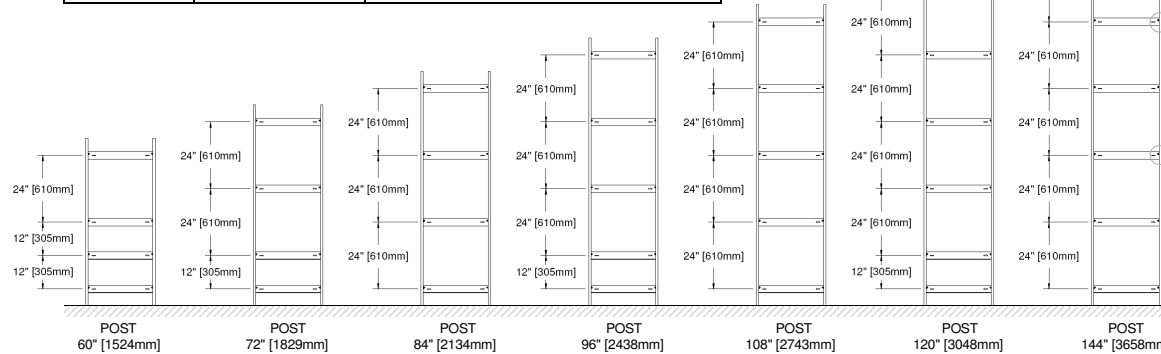
ALLOWABLE SPACING BETWEEN FRAME CONNECTORS

	Heavy Loads over 3,000lb (1,361kg) to 7,000lb (3,175kg) or 30" (762mm) and 36" (914mm) in Depth	
	Two Hook	Three Hook
Dimension A Not to Exceed	Bottom	6" (152mm)
Dimension B Not to Exceed	24" (610mm)	30" (762mm)



NUMBERS OF POST CONNECTORS REQUIRED

Height of Post		Heavy Loads over 3,000lb (1,361kg) to 7,000lb (3,175kg) or 30" (762mm) and 36" (914mm) in Depth
Inches	Metric	
24" to 36"	610mm to 914mm	3
48" to 84"	1219mm to 2134mm	4
96" to 108"	2438mm to 2743mm	5
120" to 144"	3048mm to 3658mm	6



POST CONNECTOR TABS MUST BE LOCKED IN PLACE FOR SAFETY, TYP.

USE THREE MIDDLE POST CONNECTOR SLOTS, TYP.

LAYOUT INFORMATION - CREEPAGE

When designing shelving layout, allow for an additional 1 1/2" (38.1 mm) creepage for each end frame in the row and 1" (25.4 mm) creepage in depth for each end frame.

IMPORTANT NOTES:

- Post Connector requirements are for static loading only; no shocks, vibrations, seismic, mobile or other special conditions are considered.
- Always lock all post connectors on both sides to the posts that make up the shelving end frame. Refer to the assembly instructions guide for typical placement.
- Be sure the post connectors are tapped down completely so the locking tab can be engaged before twisting and locking tab as per drawing. It is best to use a chainsaw wrench but a 3/8" screwdriver can also be used.
- Not locking the post connectors can lead to a dangerous situation and the shelving could collapse.
- Please contact your representative or the factory direct for help on design, seismic and mobile aisle, **CDN./ U.S. 1 888 397 4353 • U.K. 01993 779494.**