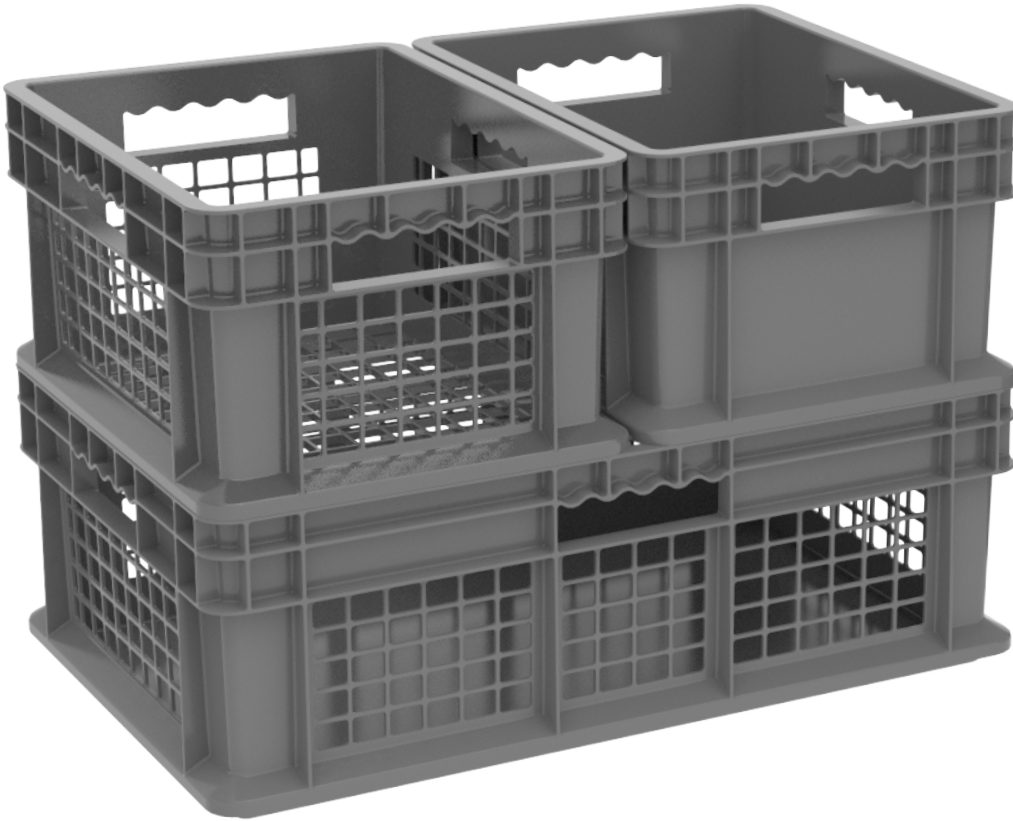


Straight Wall Containers

Reusable shipping, storage and work-in-process containers

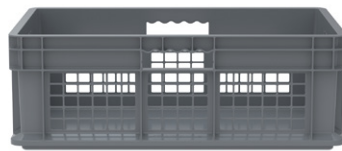
- Straight walls provide efficient internal and external space usage
- Mesh versions allow visibility, air ventilation and drainage



Interworking sizes facilitate cubing in trucks and on pallets.



Handholds on all four sides.



Straight Wall Containers (SWCs)			Outside Dimensions (In.)			Inside Dimensions Bottom (In.)			Capacity/Qty.			Stacked Capacity/Qty.	
Model No. Mesh Side & Base	Model No. Mesh Side/Solid Base	Model No. Solid Side & Base	L	W	H	L	W	H	Cu. Ft.	Gal.	Container Ctn. Qty.	Solid Bottom	Mesh Bottom
37208	37278	37288	15-3/4	11-3/4	8-1/4	14	10	8	0.89	5.12	12	83 lbs./6	30 lbs./6
37608	37678	37688	23-3/4	15-3/4	8-1/4	22	14	8	1.78	11.19	4	83 lbs./6	45 lbs./6
37612	37672	37682	23-3/4	15-3/4	12-1/4	22	14	12	2.67	8.32	3	125 lbs./5	45 lbs./5
37616	37676	37686	23-3/4	15-3/4	16-1/8	22	14	16	3.55	11.07	2	150 lbs./4	45 lbs./4

Order in carton quantities.



akro-mils.com

1293 South Main Street, Akron, Ohio 44301 • Tel: 800.253.2467 • inquiry@akro-mils.com

In Canada: Ak-West, Inc. • Tel: 877.979.8940 • Fax: 403.225.1696 • sales@ak-westinc.com • ak-westinc.com