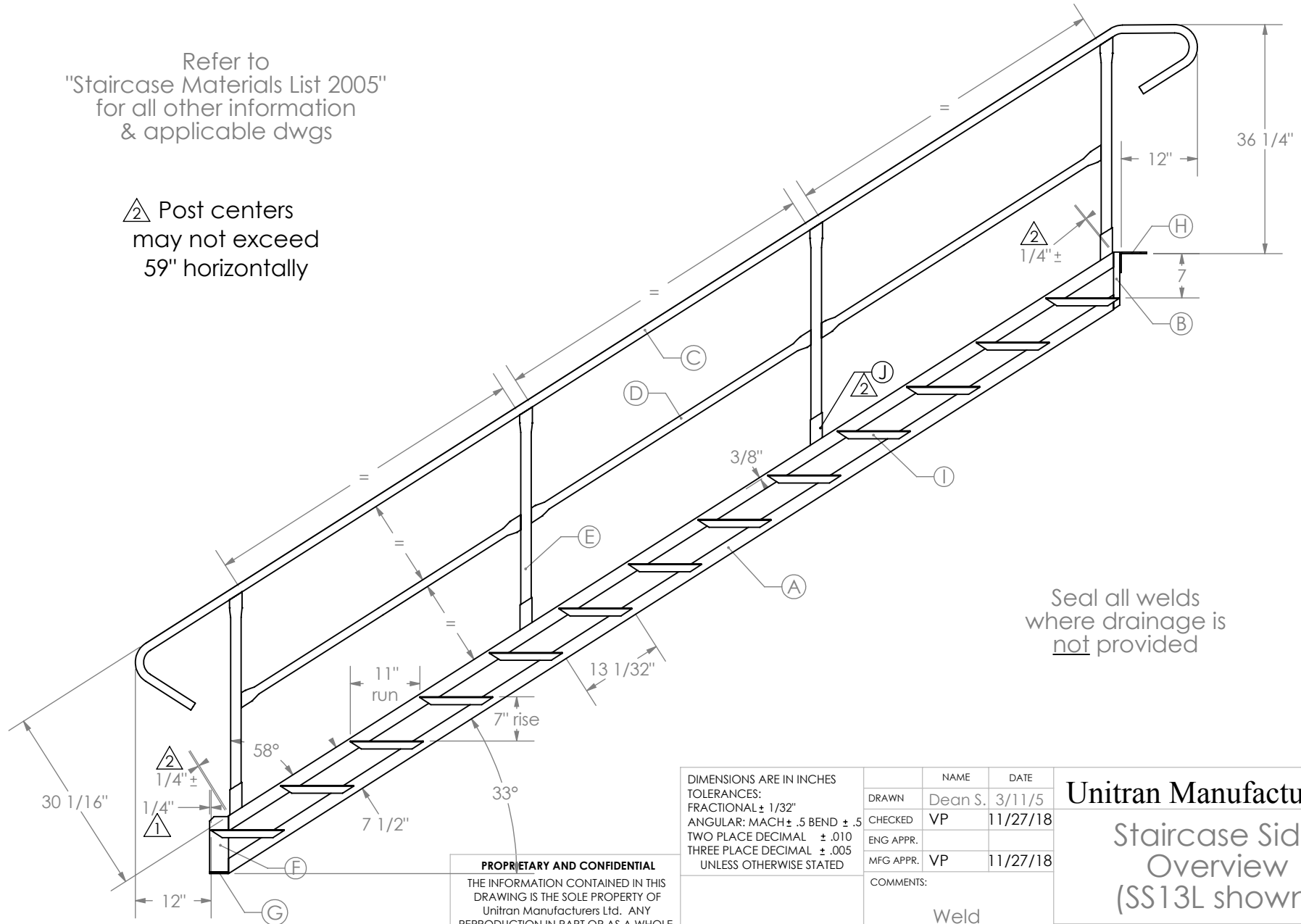


		REVISIONS		
ZONE	REV.	DESCRIPTION	DATE	APPROVED
	1	dimension added	3/5/13	
	2	part and notation added	10/31/18	VP
	2	dimension removed - new dimension added	10/31/18	VP

Refer to
"Staircase Materials List 2005"
for all other information
& applicable dwgs

△ Post centers
may not exceed
59" horizontally



Seal all welds
where drainage is
not provided

DIMENSIONS ARE IN INCHES
TOLERANCES:
FRACTIONAL $\pm 1/32"$
ANGULAR: MACH $\pm .5$ BEND $\pm .5$
TWO PLACE DECIMAL $\pm .010$
THREE PLACE DECIMAL $\pm .005$
UNLESS OTHERWISE STATED

	NAME	DATE
DRAWN	Dean S.	3/11/5
CHECKED	VP	11/27/18
ENG APPR.		
MFG APPR.	VP	11/27/18

COMMENTS:

Weld
as per jigs

Unitran Manufacturers

Staircase Side
Overview
(SS13L shown)

DWG. NO.	U-0279	REV.	2
SCALE:	WEIGHT:	SHEET 1 OF 1	

PROPRIETARY AND CONFIDENTIAL
THE INFORMATION CONTAINED IN THIS
DRAWING IS THE SOLE PROPERTY OF
Unitran Manufacturers Ltd. ANY
REPRODUCTION IN PART OR AS A WHOLE
WITHOUT THE WRITTEN PERMISSION OF
Unitran Manufacturers Ltd.
IS PROHIBITED.

DO NOT SCALE DRAWING