

Louvered Hanging Systems

Customizable, flexible vertical storage for hanging bins

- This universal hanging surface provides easy placement and configuration of multiple sizes and styles of bins
- Wall-mounted panels keep items out of the way, off the floor and off the work table
- Create storage space anywhere! Flexible solutions for any environment



30632GY with 30210RED



30636BEIGE with 30320BLUE



30161BEIGE with 30239



Easy Assembly!

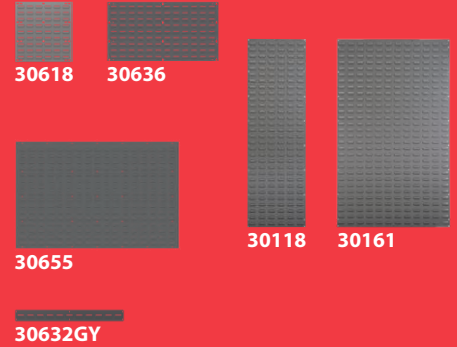
Models, 30658, 30661, and 30676 are full louvered panels pre-mounted to a heavy-duty frame, saving assembly time.

COLORS

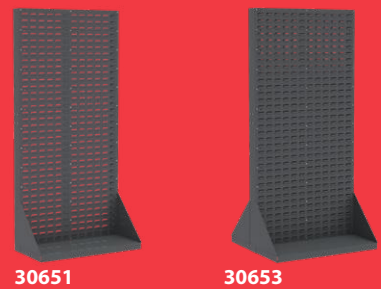
Gray, Beige, Textured White



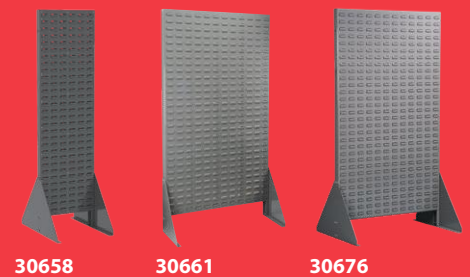
WALL PANELS



HEAVY-DUTY FLOOR RACKS



RIVET FLOOR RACKS



BENCH RACKS



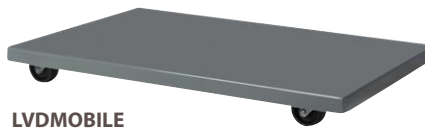
AkroBin Louvered Hanging Systems			Dimensions (In.)				AkroBin Quantity to Fit Louvered Hanging System – AkroBins Model No.														
Model No.	Description	Ctn. Qty	L	W	H	Rack Wt. Cap.(lbs.)	30210	30220	30224	30230	30234	30235	30237	30239	30240	30250	30255	30260	30265	30270	30320
30618†	Louvered Wall Panel	4	18	5/16	19	160	16	16	12	9	9	3	6	4	4	2	3	1	2	1	–
30632	Single Row Louvered Panel	2	31-15/16	5/16	3	80	7	7	7	5	5	2	5	3	3	1	1	2	3	1	–
30636*‡	Louvered Wall Panel	4	35-3/4	5/16	19	160	32	32	24	18	18	9	15	8	8	4	6	3	4	2	3
	2 Louvered Wall Panels		35-3/4	5/16	37	–	72	72	48	36	36	18	30	16	16	8	12	9	12	6	6
	3 Louvered Wall Panels		35-3/4	5/16	55	–	104	104	72	54	54	27	45	24	24	12	18	12	20	8	9
	4 Louvered Wall Panels		35-3/4	5/16	73	–	144	144	96	72	72	36	60	36	36	18	24	18	28	12	12
30655	Louvered Wall Panel	1	52	5/16	34-1/8	750	96	96	60	45	45	20	40	24	24	12	15	8	18	6	5
30161*	Louvered Wall Panel	1	36	5/16	61	1000	120	120	80	60	60	30	50	28	28	14	20	15	24	10	10
30118*‡	Louvered Wall Panel	1	18	5/16	61	500	60	60	40	30	30	10	20	14	14	7	10	5	12	5	–
30651	Heavy-Duty Single-Sided Floor Rack	1	35-3/4	17	75-1/8	1000	144	144	96	72	72	36	60	36	36	18	24	18	28	12	12
30653	Heavy-Duty Double-Sided Floor Rack	1	35-3/4	32	75-1/8	2000	288	288	192	144	144	72	120	72	72	36	48	36	56	24	24
30658	Double-Sided Rivet Floor Rack	1	18	25	66-3/8	500	120	120	80	60	60	20	40	28	28	14	20	10	24	10	–
30661	Single-Sided Rivet Floor Rack	1	36-3/16	13-1/2	66-3/8	500	120	120	80	60	60	30	50	28	28	14	20	15	24	10	10
30676	Double-Sided Rivet Floor Rack	1	36-3/16	25	66-3/8	1000	240	240	160	120	120	60	100	56	56	28	40	30	48	20	20
LVDMOBILE	Mobile Kit for 30676	1	–	–	–	1500	–	–	–	–	–	–	–	–	–	–	–	–	–	–	–
30661DOLLYGY	Gray Floor Rack Dolly for 30661	1	37	24	6	500	–	–	–	–	–	–	–	–	–	–	–	–	–	–	–

*Also available in Beige. ‡Also available in Textured White. Specify color when ordering. Beige = BEIGE, White = TEXWHT, GY = Gray.

Louvered Bench Rack			Dimensions (In.)				AkroBin Quantity to Fit Louvered Hanging System – AkroBins Model No.													
Model No.	Description	Ctn. Qty	L	W	H	Rack Wt. Cap.(lbs.)	30210	30220	30224	30230	30234	30235	30237	30239	30240	30250	30255	30260	30265	30320
98600	Bench Rack	1	27-15/16	8-9/16	19-9/16	120	30	30	18	12	12	6	12	6	6	2	3	2	6	–
98636	Bench Rack	1	36	8	20	120	40	40	24	18	18	9	15	8	8	4	6	3	8	3

Double-Sided Benchtop Spinner Rack			Dimensions (In.)				Bin quantity – AkroBin Model No.					19-Series Cabinets
Model No.	Description	Ctn. Qty	W	D	H	Rack Wt. Cap.(lbs.)*	30210	30220	30224	30230	30237	
98318GY	Double Sided Benchtop Spinner Rack	1	18½	16	34¼	200	56	56	40	30	20	4

*Weight evenly distributed on both sides of unit.



akro-mils.com

1293 South Main Street, Akron, Ohio 44301 • Tel: 800.253.2467 • inquiry@akro-mils.com

In Canada: Ak-West, Inc. • Tel: 877.979.8940 • Fax: 403.225.1696 • sales@ak-westinc.com • ak-westinc.com