

Modular Drawer

MODULAR DRAWER



THE ROUSSEAU DRAWER : FIRST TO THE FINISH LINE

The sturdiest and the most durable on the market

Tested in an independent laboratory, the Rousseau drawer proved its superiority on many levels: loaded to its full capacity, the Rousseau drawer completed a high level of cycles, without showing any signs of wear. The Rousseau drawer has become the champion of its category.

Its performance can be defined in terms of its durability. The Rousseau drawer's sturdy construction offers superior output while having a much longer lifespan. This is why Rousseau doesn't even hesitate to offer a Life-time Warranty on the drawer rolling mechanism. An undeniable advantage!



A multitude of accessories

The Rousseau drawer makes your work easy: The vast array of accessories offered, all of which are compatible with each other, contribute to maximizing the organization of your work space. In addition, all of these accessories can be easily rearranged according to your needs, making them a joy to use and displaying just how highly functional they are.



Streamlined design

In addition to being sturdy and functional, the Rousseau drawer has an alluring appearance. It fits just as well in an office as it does in a factory. It allows you to arrange your work space in a harmonious and aesthetic fashion. The unique shape of the "R" drawer is a Rousseau Metal Inc. trademark and we have protected the industrial design of the drawer.

Modular Drawer

MODULAR DRAWER

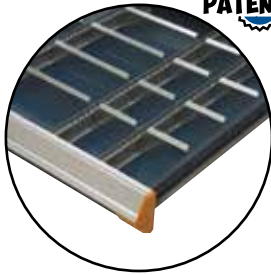
The Rousseau Advantages



With a capacity of 400 lb, the drawer can be opened thousands of times without showing signs of slowing down.



10 drawer heights and 7 side heights are available.



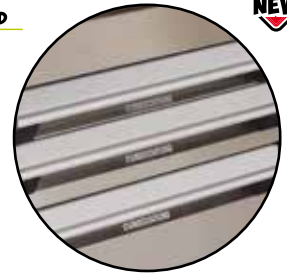
Partitions and dividers are clipped in.

PATENTED



Company name embossed on the face of the drawer. If you don't see ROUSSEAU, it's not a ROUSSEAU.

INDUSTRIAL DESIGN PATENTED



Stainless steel drawer front brings a polished look to cabinets and shelving. Excellent chemical and corrosion resistance.

NEW

Details that make the difference

ERGONOMIC

The full-width handle as well as the accessories (Integrated Lock-In mechanism, Lock-Out mechanism, lock, etc.) have been designed down to the smallest detail in order to make your work easier.

EFFICIENT

A multitude of available accessories, such as partitions and dividers, plastic bins, groove trays, foam for tools and hanging file bars allow you to organize your space.

ACCESSIBLE

Drawers open 100%, giving you complete access to the contents.



R5AEE-5825

STURDY

400 lb capacity per drawer.



DURABLE



R5SEE-874803

INGENIOUS

Accessories can be added at all times.

NOTE The unique shape of the "R" drawer is a Rousseau Metal Inc. trademark.

Index	Page(s)
Modular Drawer	138 - 142
Proposals	143 - 156
Accessories	157 - 161

16 drawer sizes x 10 heights = 160 possible dimensions

24" W

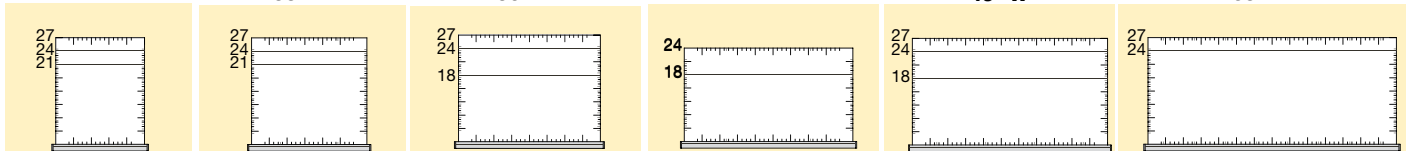
30" W

36" W

42" W

48" W

60" W



Modular Drawer

Modular Drawers and Roll-Out Shelves

MODULAR DRAWER

Heavy-Duty Modular Drawer



Painted steel drawer for cabinets (and multi-drawer) : RF31;
 Painted steel drawer for shelving : RF32;
 Drawer with stainless steel drawer front for cabinets (and multi-drawer) : RF35;
 Drawer with stainless steel drawer front for shelving : RF36;
 400 lb capacity, 100% extension;
 Heavy-duty construction;
 Easy to install;
 Vast choice of accessories offered to adapt to your storage needs;
 Available drawer heights : 3", 4", 5", 6", 7", 8", 9", 10", 12" and 14";
 Order by adding the drawer height to the product # and by specifying the type of application (cabinet or shelving) and the type of drawer front (painted steel or stainless steel). Ex.: RF31-362406.
 For modular drawers with layouts,

SEE PAGES 157-161

SEE PAGES 141-156

Product #	W x D	Product #	W x D
RF_-2421	24" x 21"	RF_-3627	36" x 27"
RF_-2424	24" x 24"	RF_-4218	42" x 18"
RF_-2427	24" x 27"	RF_-4224	42" x 24"
RF_-3021	30" x 21"	RF_-4818	48" x 18"
RF_-3024	30" x 24"	RF_-4824	48" x 24"
RF_-3027	30" x 27"	RF_-4827	48" x 27"
RF_-3618	36" x 18"	RF_-6024	60" x 24"
RF_-3624	36" x 24"	RF_-6027	60" x 27"

Heavy-Duty Front Access Roll-Out Shelf



Roll-out shelf for cabinet (and multi-drawer) : RF40;
 Roll-out shelf for shelving : RF41;
 400 lb capacity, 100% extension;
 Heavy-duty construction;
 Easy to install;
 Painted steel with 3" edges on sides and back;
 Full access to contents;
 Height : 6";
 Order by specifying the type of application (cabinet or shelving). Ex. : RF40-3624.

Product #	W x D	Product #	W x D
RF_-2421	24" x 21"	RF_-3627	36" x 27"
RF_-2424	24" x 24"	RF_-4218	42" x 18"
RF_-2427	24" x 27"	RF_-4224	42" x 24"
RF_-3021	30" x 21"	RF_-4818	48" x 18"
RF_-3024	30" x 24"	RF_-4824	48" x 24"
RF_-3027	30" x 27"	RF_-4827	48" x 27"
RF_-3618	36" x 18"	RF_-6024	60" x 24"
RF_-3624	36" x 24"	RF_-6027	60" x 27"

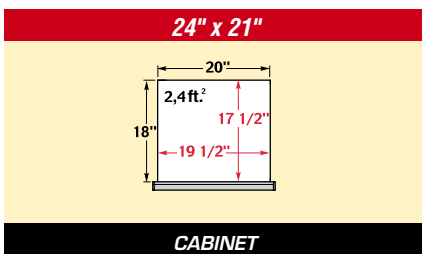
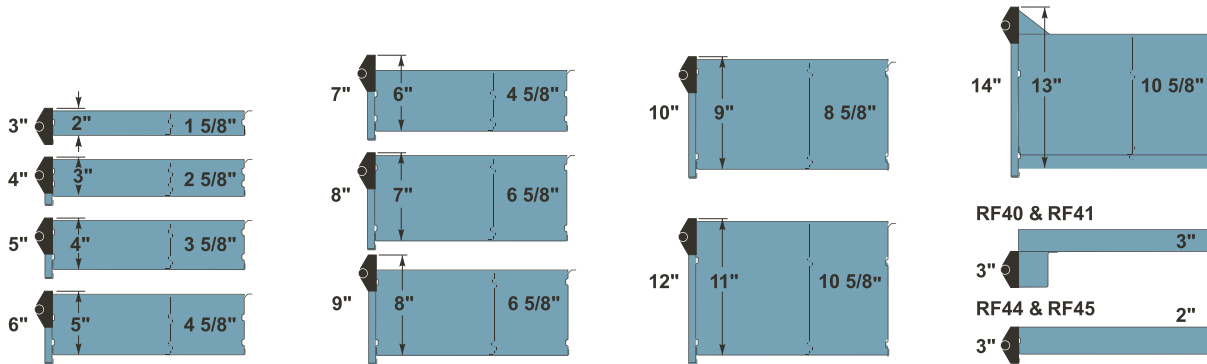
Heavy-Duty 3 Sided Access Roll-Out Shelf



Roll-out shelf, 3-sided access for cabinet (and multi-drawer) : RF44;
 Roll-out shelf, 3-sided access for shelving : RF45;
 400 lb capacity, 100% extension;
 Heavy-duty construction;
 Easy to install;
 Galvanized steel with 1 1/2" edge on back;
 Height : 5";
 May serve as work surface;
 Order by specifying the type of application (cabinet or shelving). Ex. : RF44-3624.

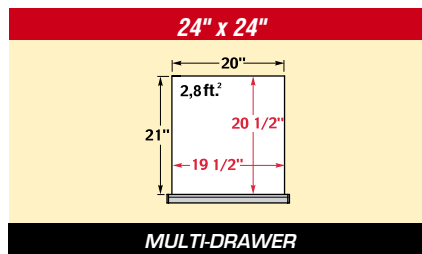
Product #	W x D	Product #	W x D
RF_-2421	24" x 21"	RF_-3627	36" x 27"
RF_-2424	24" x 24"	RF_-4218	42" x 18"
RF_-2427	24" x 27"	RF_-4224	42" x 24"
RF_-3021	30" x 21"	RF_-4818	48" x 18"
RF_-3024	30" x 24"	RF_-4824	48" x 24"
RF_-3027	30" x 27"	RF_-4827	48" x 27"
RF_-3618	36" x 18"	RF_-6024	60" x 24"
RF_-3624	36" x 24"	RF_-6027	60" x 27"

Drawer and Roll-Out Shelf Dimensions



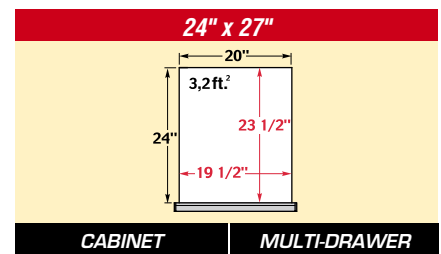
CABINET

- RF31-2421
- RF35-2421
- RF40-2421
- RF44-2421



MULTI-DRAWER

SEE PAGES 54-59

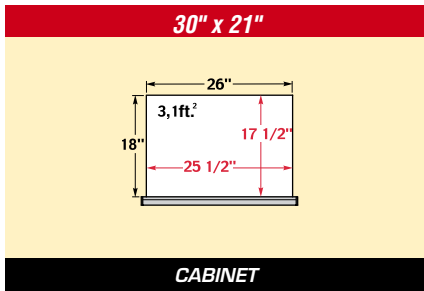


CABINET

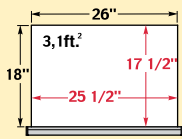
- RF31-2427
- RF35-2427
- RF40-2427
- RF44-2427

MULTI-DRAWER

SEE PAGES 54-59

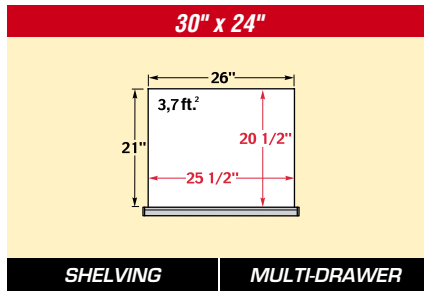


30" x 21"

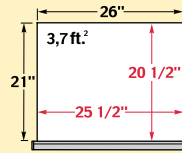


CABINET

- RF31-3021
- RF35-3021
- RF40-3021
- RF44-3021



30" x 24"

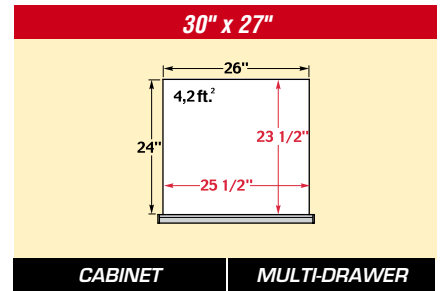


SHELVING

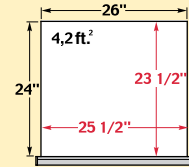
- RF32-3024
- RF36-3024
- RF41-3024
- RF45-3024

MULTI-DRAWER

SEE PAGES 54-59



30" x 27"

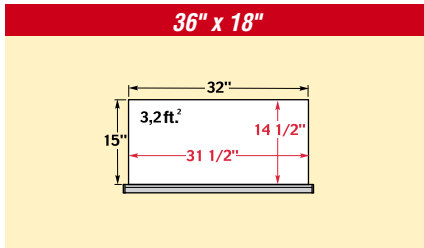


CABINET

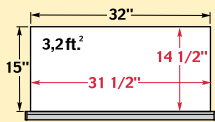
- RF31-3027
- RF35-3027
- RF40-3027
- RF44-3027

MULTI-DRAWER

SEE PAGES 54-59



36" x 18"

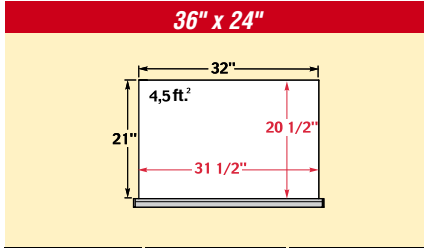


CABINET

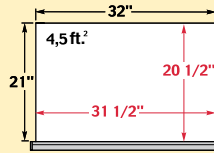
- RF31-3618
- RF35-3618
- RF40-3618
- RF44-3618

SHELVING

- RF32-3618
- RF36-3618
- RF41-3618
- RF45-3618



36" x 24"



CABINET

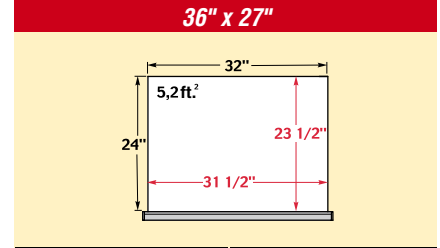
- RF31-3624
- RF35-3624
- RF40-3624
- RF44-3624

SHELVING

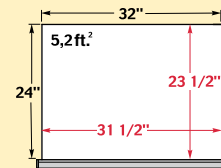
- RF32-3624
- RF36-3624
- RF41-3624
- RF45-3624

MULTI-DRAWER

SEE PAGES 54-59



36" x 27"

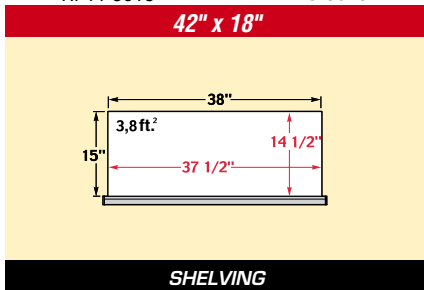


CABINET

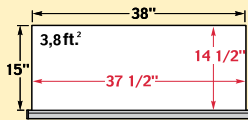
- RF31-3627
- RF35-3627
- RF40-3627
- RF44-3627

MULTI-DRAWER

SEE PAGES 54-59

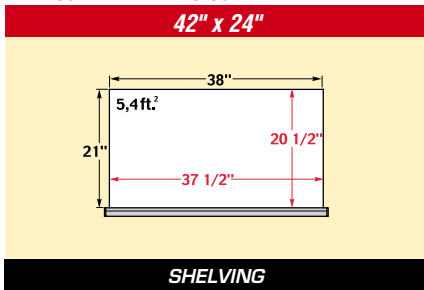


42" x 18"

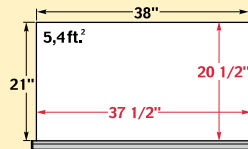


SHELVING

- RF32-4218
- RF36-4218
- RF41-4218
- RF45-4218



42" x 24"

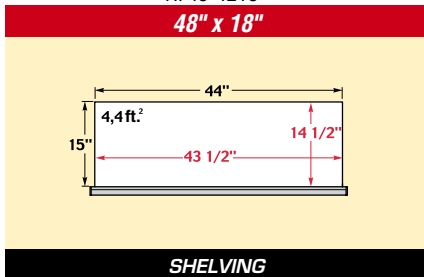


SHELVING

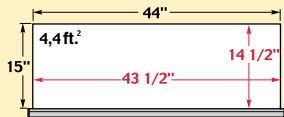
- RF32-4224
- RF36-4224
- RF41-4224
- RF45-4224



R5ADG-5822

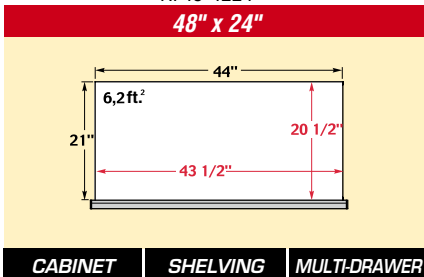


48" x 18"

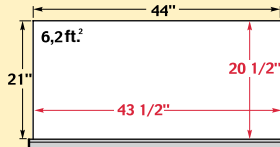


SHELVING

- RF32-4818
- RF36-4818
- RF41-4818
- RF45-4818



48" x 24"



CABINET

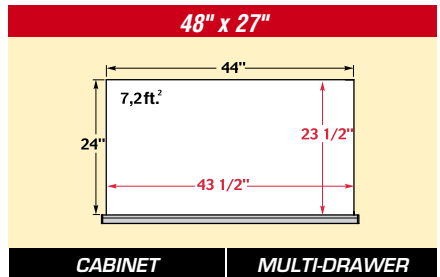
- RF31-4824
- RF35-4824
- RF40-4824
- RF44-4824

SHELVING

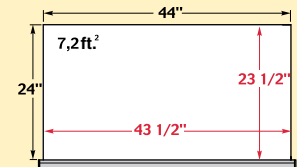
- RF32-4824
- RF36-4824
- RF41-4824
- RF45-4824

MULTI-DRAWER

SEE PAGES 54-59



48" x 27"



CABINET

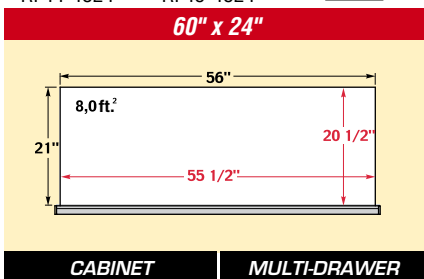
- RF31-4827
- RF35-4827
- RF40-4827
- RF44-4827

MULTI-DRAWER

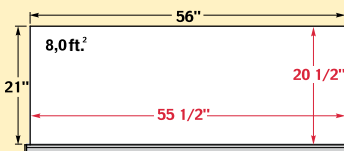
SEE PAGES 54-59



R5EKG-5808



60" x 24"

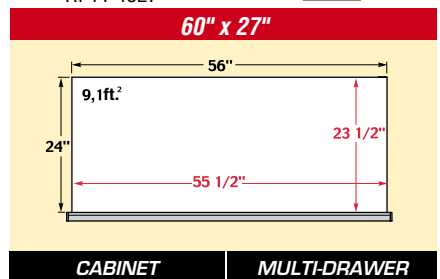


CABINET

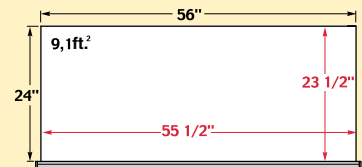
- RF31-6024
- RF35-6024
- RF40-6024
- RF44-6024

MULTI-DRAWER

SEE PAGES 54-59



60" x 27"



CABINET

- RF31-6027
- RF35-6027
- RF40-6027
- RF44-6027

MULTI-DRAWER

SEE PAGES 54-59

Modular Drawer

How to Order a Drawer

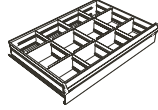
You can choose a drawer model from among our proposals with layouts :

00 for layout kit only

51 for a painted steel drawer in a cabinet, with layout

52 for a painted steel drawer in shelving, with layout,

SEE PAGES 141-156



EXAMPLE: R EE-A0200

Drawer height

SEE PAGE 140

Locking or security mechanism

SEE PAGE 161

Example : R52EE-A020006 L3A for a drawer (36" W x 24" D) in shelving, with layout, 6" drawer height with lock on drawer and integrated Lock-in mechanism.

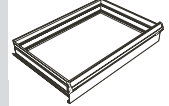
You can create a personalized model by choosing an empty drawer (to which you can add layout accessories) :

31 for a painted steel drawer in a cabinet

32 for a painted steel drawer in shelving

35 for a drawer with stainless steel front in a cabinet

36 for a drawer with stainless steel front in shelving



EXAMPLE: RF -3624

Drawer height

SEE PAGE 140

Locking or security mechanism

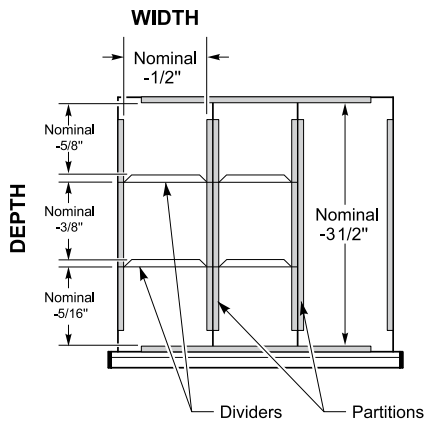
SEE PAGE 161

To add layout accessories, accessories must be ordered separately

SEE PAGES 157-161

Example : RF31-362406 L3A for a painted steel drawer (36" W x 24" D) for cabinet, 6" drawer height with lock on the drawer and integrated Lock-in mechanism.

To calculate drawer compartment dimensions, refer to the following illustration.



Drawer dimensions

		INSIDE WIDTH					
		20"	26"	32"	38"	44"	56"
OUTSIDE DEPTH	27"						60"x27"
	24"	24"x27"	30"x27"	36"x27"	48"x27"		
	21"	24"x24"	30"x24"	36"x24"	42"x24"	48"x24"	60"x24"
INSIDE DEPTH	18"	24"x21"	30"x21"				
	15"			36"x18"	42"x18"	48"x18"	
		OUTSIDE WIDTH					
		24"	30"	36"	42"	48"	60"

How to Order a Roll-Out Shelf

Complete the first portion of the # according to the type of roll-out shelf being ordered :

40 for a roll-out shelf in a cabinet

41 for a roll-out shelf in shelving

44 for roll-out shelf with 3-sided access for cabinet

45 for roll-out shelf with 3-sided access for shelving

EXAMPLE: RF -3624

Locking or security mechanism

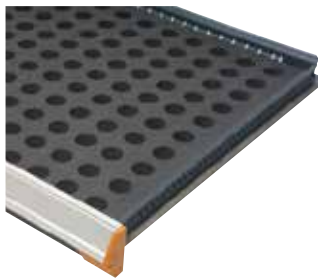
SEE PAGE 161

Complete Example : RF41-3624A for a roll-out shelf with 3-sided access for a cabinet, with integrated Lock-In mechanism.

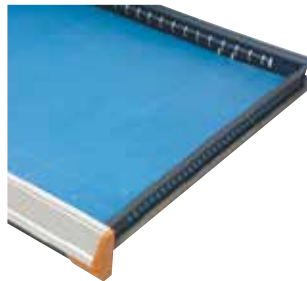


R5XEE-2002

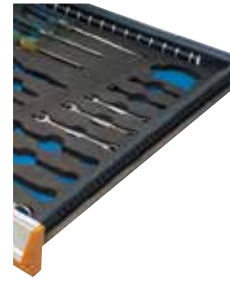
Examples of Available Drawer Interiors



Foam for collets



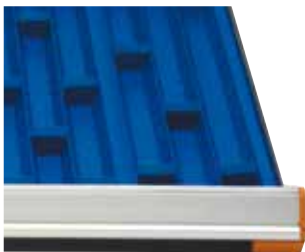
Foam for protection



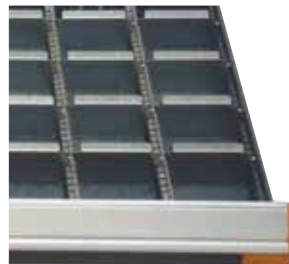
Foam for tools



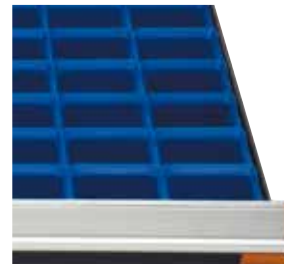
Hanging file bars



Groove trays



Partitions and dividers



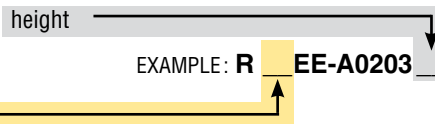
Plastic bins

To order, complete the part number with the drawer height :

00 for compartments only

51 for a painted steel drawer in a cabinet, with layout

52 for a painted steel drawer in shelving, with layout

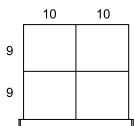


Ex.: R51CD-A010206 for a painted steel drawer with compartments for a 24" W x 21" D cabinet, 6" high.

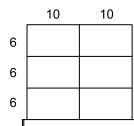
24" x 21" (W x D) Drawers

For Cabinet

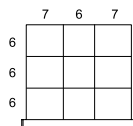
Partitions and Dividers



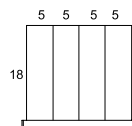
R_CD-A0102
4 compartments



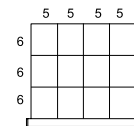
R_CD-A0104
6 compartments



R_CD-A0206
9 compartments

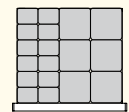


R_CD-A0300
4 compartments

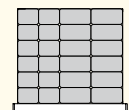


R_CD-A0308
12 compartments

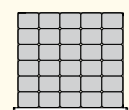
Plastic Bins



R_CD-E018
18 bins

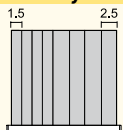


R_CD-E024
24 bins

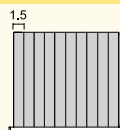


R_CD-E030
30 bins

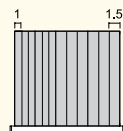
Groove Trays



R_CD-G00803
8 groove trays

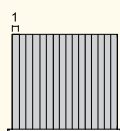


R_CD-G01003
10 groove trays



R_CD-G01203
12 groove trays

2 dividers included with each groove tray.

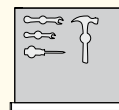


R_CD-G01603
16 groove trays

Foam



R_CD-J0103
For protection



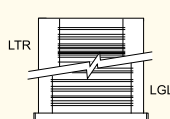
R_CD-J0203
For tools



Sold without cut-outs.
For custom cut-outs,

SEE
PAGE
195

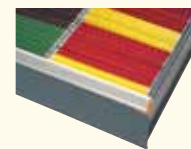
Folder Hanging Bars



R_CD-KFB12



R_CD-KLR12



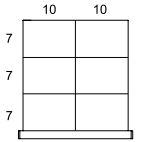
Proposals

24" x 24" (W x D) Drawers

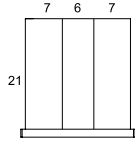
For multi-drawer*

* These proposals include compartments only.

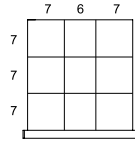
Partitions and Dividers



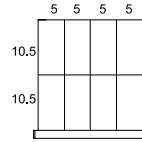
R00CE-A0104
6 compartments



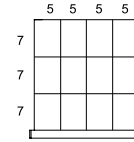
R00CE-A0200
3 compartments



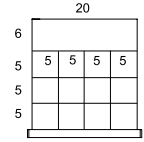
R00CE-A0206
9 compartments



R00CE-A0304
8 compartments

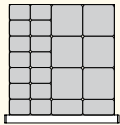


R00CE-A0308
12 compartments

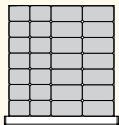


R00CE-C0408
13 compartments

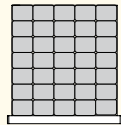
Plastic Bins



R00CE-E022
22 bins

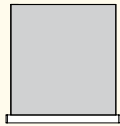


R00CE-E028
28 bins

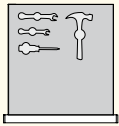


R00CE-E035
35 bins

Foam



R00CE-J0103
For protection

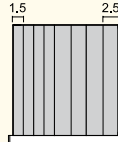


R00CE-J0203
For tools

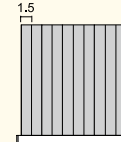
Sold without cut-outs.
For custom cut-outs,

SEE
PAGE
195

Groove Trays

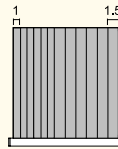


R00CE-G00803
8 groove trays

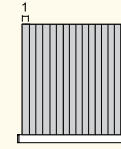


R00CE-G01003
10 groove trays

2 dividers included with each groove tray.

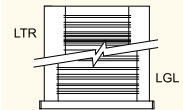


R00CE-G01203
12 groove trays

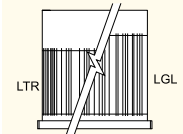


R00CE-G01603
16 groove trays

Folder Hanging Bars



R00CE-KFB12



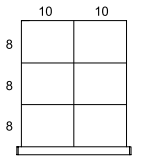
R00CE-KLR12

24" x 27" (W x D) Drawers

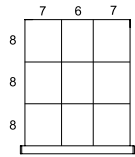
For Cabinet

For Multi-Drawer

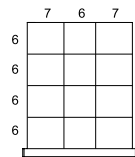
Partitions and Dividers



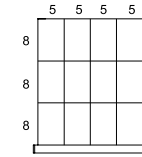
R CG-A0104
6 compartments



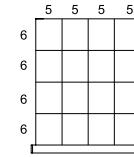
R CG-A0206
9 compartments



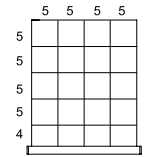
R CG-A0209
12 compartments



R CG-A0308
12 compartments

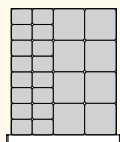


R CG-A0312
16 compartments

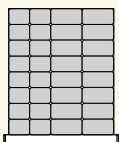


R CG-A0316
20 compartments

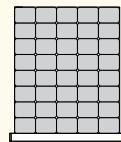
Plastic Bins



R CG-E024
24 bins

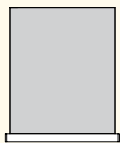


R CG-E032
32 bins

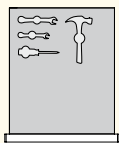


R CG-E040
40 bins

Foam



R CG-J0103
For protection

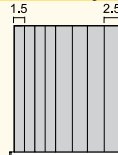


R CG-J0203
For tools

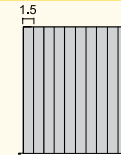
Sold without cut-outs.
For custom cut-outs,

SEE
PAGE
195

Groove Trays

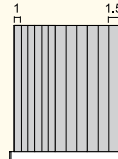


R CG-G00803
8 groove trays

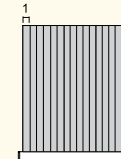


R CG-G01003
10 groove trays

2 dividers included with each groove tray.

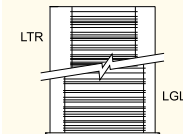


R CG-G01203
12 groove trays

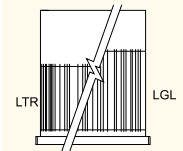


R CG-G01603
16 groove trays

Folder Hanging Bars



R CG-KFB12

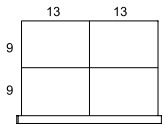


R CG-KLR12

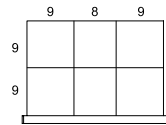
30" x 21" (W x D) Drawers

For Cabinet

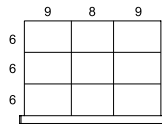
Partitions and Dividers



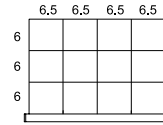
R_DD-A0102
4 compartments



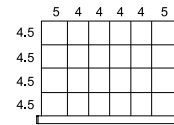
R_DD-A0203
6 compartments



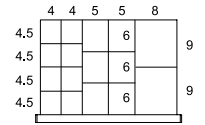
R_DD-A0206
9 compartments



R_DD-A0308
12 compartments

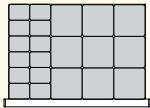


R_DD-A0518
24 compartments

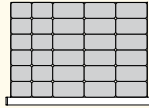


R_DD-D0411
16 compartments

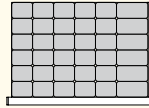
Plastic Bins



R_DD-E021
21 bins

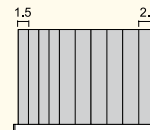


R_DD-E030
30 bins

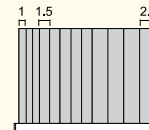


R_DD-E036
36 bins

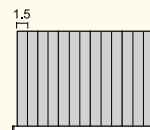
Groove Trays



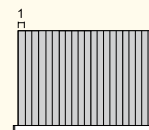
R_DD-G01003
10 groove trays



R_DD-G01203
12 groove trays

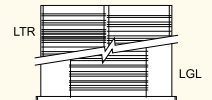


R_DD-G01303
13 groove trays



R_DD-G02103
21 groove trays

Folder Hanging Bars



R_DD-KFB12

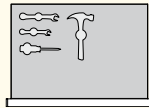


R_DD-KLR12

Foam



R_DD-J0103
For protection



R_DD-J0203
For tools



Sold without cut-outs.
For custom cut-outs,

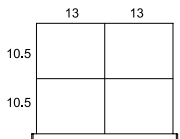
SEE
PAGE
195

30" x 24" (W x D) Drawers

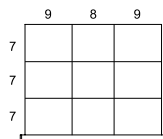
For Shelving

For Multi-Drawer

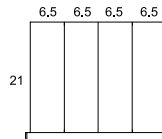
Partitions and Dividers



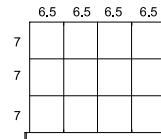
R_DE-A0102
4 compartments



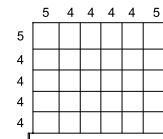
R_DE-A0206
9 compartments



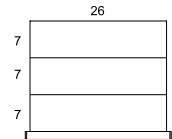
R_DE-A0300
4 compartments



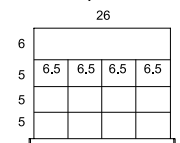
R_DE-A0308
12 compartments



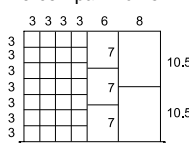
R_DE-A0524
30 compartments



R_DE-B0200
3 compartments

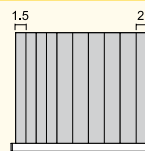


R_DE-C0408
13 compartments

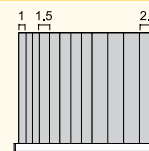


R_DE-D0527
33 compartments

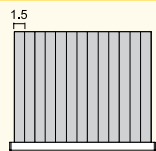
Groove Trays



R_DE-G01003
10 groove trays

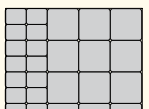


R_DE-G01203
12 groove trays

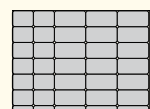


R_DE-G01303
13 groove trays

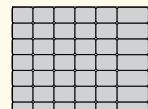
Plastic Bins



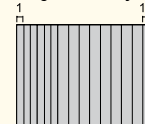
R_DE-E026
26 bins



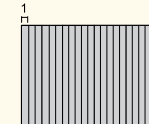
R_DE-E035
35 bins



R_DE-E042
42 bins



R_DE-G01503
15 groove trays



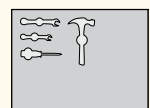
R_DE-G02103
21 groove trays

2 dividers included with each groove tray.

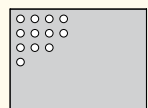
Foam



R_DE-J0103
For protection



R_DE-J0203
For tools



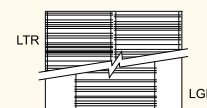
R_DE-J0303
For collets



Sold without cut-outs.
For custom cut-outs,

SEE
PAGE
195

Folder Hanging Bars



R_DE-KFB12



R_DE-KLR12

Proposals

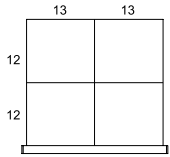
30" x 27" (W x D) Drawers

For Cabinet

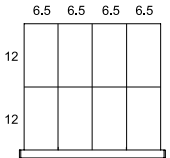
For Multi-Drawer

MODULAR DRAWER

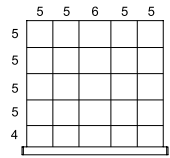
Partitions and Dividers



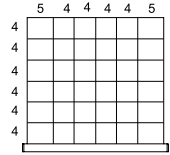
R_DG-A0102
4 compartments



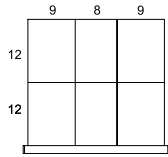
R_DG-A0304
8 compartments



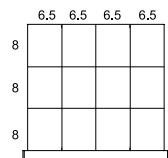
R_DG-A0420
25 compartments



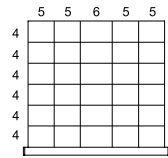
R_DG-A0530
36 compartments



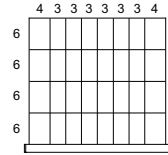
R_DG-A0203
6 compartments



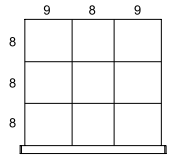
R_DG-A0308
12 compartments



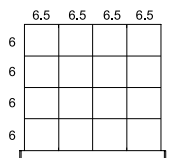
R_DG-A0425
30 compartments



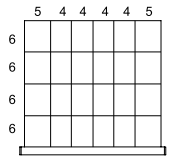
R_DG-A0724
32 compartments



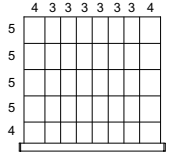
R_DG-A0206
9 compartments



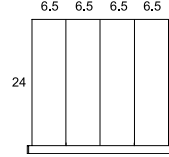
R_DG-A0312
16 compartments



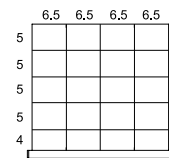
R_DG-A0518
24 compartments



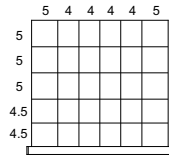
R_DG-A0732
40 compartments



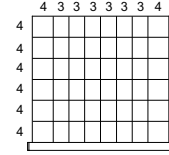
R_DG-A0300
4 compartments



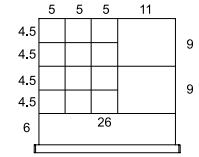
R_DG-A0316
20 compartments



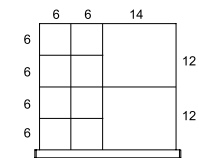
R_DG-A0524
30 compartments



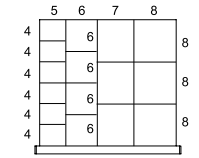
R_DG-A0740
48 compartments



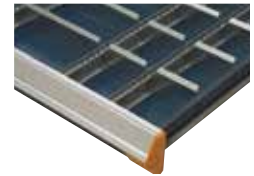
R_DG-C0410
15 compartments



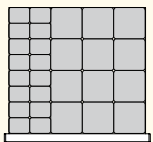
R_DG-D0207
10 compartments



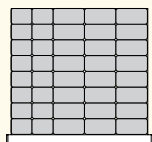
R_DG-D0312
16 compartments



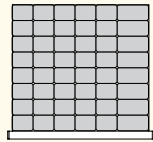
Plastic Bins



R_DG-E028
28 bins

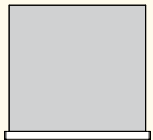


R_DG-E040
40 bins

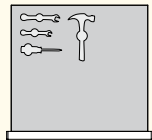


R_DG-E048
48 bins

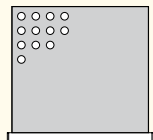
Foam



R_DG-J0103
For protection

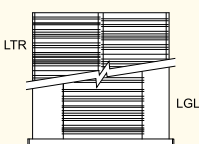


R_DG-J0203
For tools

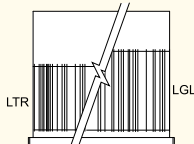


R_DG-J0303
For collets

Folder Hanging Bars



R_DG-KFB12



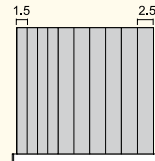
R_DG-KLR12



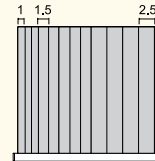
Sold without cut-outs.
For custom cut-outs,

SEE
PAGE
195

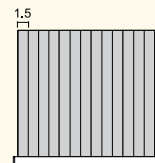
Groove Trays



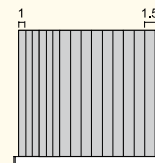
R_DG-G01003
10 groove trays



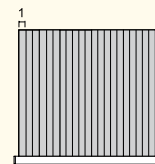
R_DG-G01203
12 groove trays



R_DG-G01303
13 groove trays



R_DG-G01503
15 groove trays



R_DG-G02103
21 groove trays

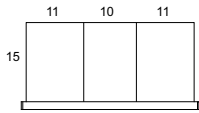
2 dividers included with
each groove tray.

36" x 18" (W x D) Drawers

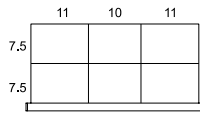
For Cabinet

For Shelving

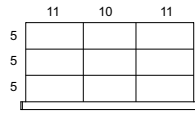
Partitions and Dividers



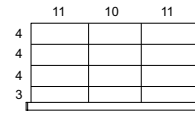
R_EC-A0200
3 compartments



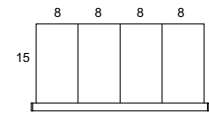
R_EC-A0203
6 compartments



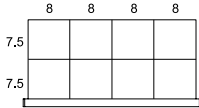
R_EC-A0206
9 compartments



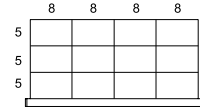
R_EC-A0209
12 compartments



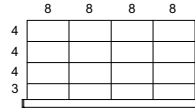
R_EC-A0300
4 compartments



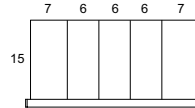
R_EC-A0304
8 compartments



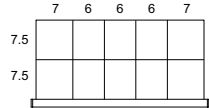
R_EC-A0308
12 compartments



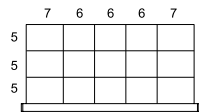
R_EC-A0312
16 compartments



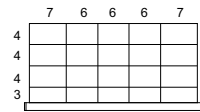
R_EC-A0400
5 compartments



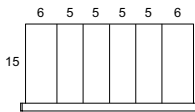
R_EC-A0405
10 compartments



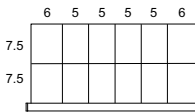
R_EC-A0410
15 compartments



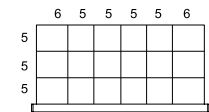
R_EC-A0415
20 compartments



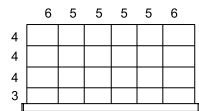
R_EC-A0500
6 compartments



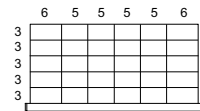
R_EC-A0506
12 compartments



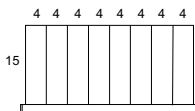
R_EC-A0512
18 compartments



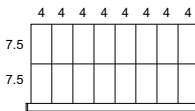
R_EC-A0518
24 compartments



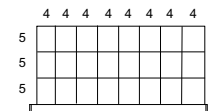
R_EC-A0524
30 compartments



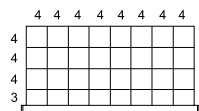
R_EC-A0700
8 compartments



R_EC-A0708
16 compartments

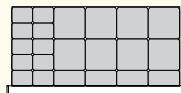


R_EC-A0716
24 compartments

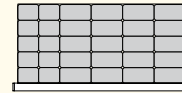


R_EC-A0724
32 compartments

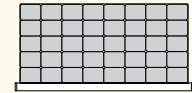
Plastic Bins



R_EC-E022
22 bins

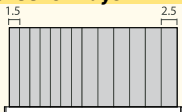


R_EC-E030
30 bins



R_EC-E040
40 bins

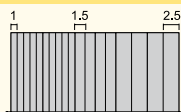
Groove Trays



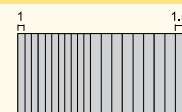
R_EC-G01303
13 groove trays



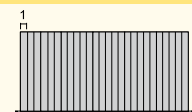
R_EC-G01603
16 groove trays



R_EC-G01803
18 groove trays



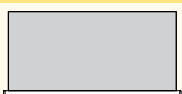
R_EC-G02003
20 groove trays



R_EC-G02603
26 groove trays

2 dividers included with each groove tray.

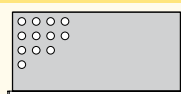
Foam



R_EC-J0103
For protection

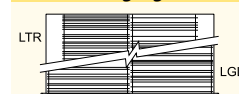


R_EC-J0203
For tools



R_EC-J0303
For collets

Folder Hanging Bars



R_EC-KFB12



R_EC-KLR12



Sold without cut-outs.
For custom cut-outs,

SEE
PAGE
195

Proposals

36" x 24" (W x D) Drawers

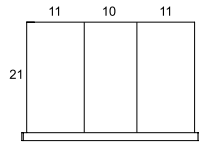
For Cabinet

For Shelving

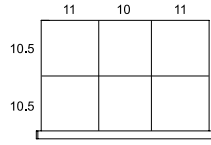
For Multi-Drawer

Partitions and Dividers

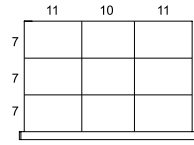
MODULAR DRAWER



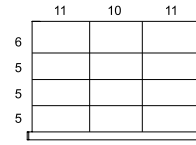
R_EE-A0200
3 compartments



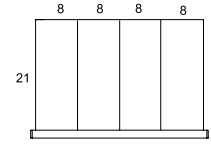
R_EE-A0203
6 compartments



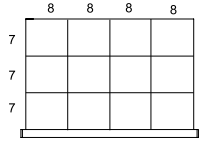
R_EE-A0206
9 compartments



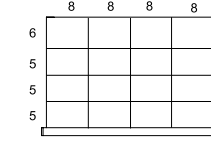
R_EE-A0209
12 compartments



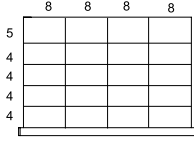
R_EE-A0300
4 compartments



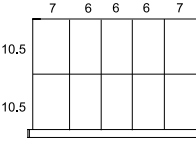
R_EE-A0308
12 compartments



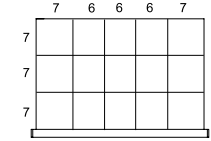
R_EE-A0312
16 compartments



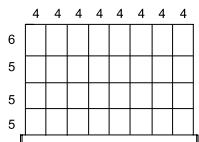
R_EE-A0316
20 compartments



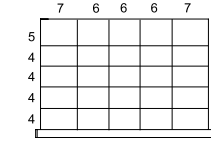
R_EE-A0405
10 compartments



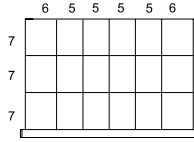
R_EE-A0410
15 compartments



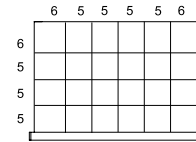
R_EE-A0724
32 compartments



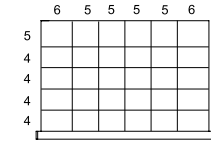
R_EE-A0420
25 compartments



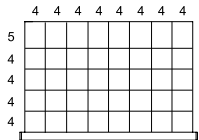
R_EE-A0512
18 compartments



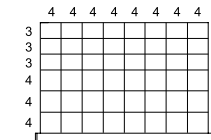
R_EE-A0518
24 compartments



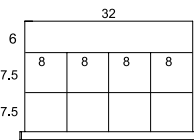
R_EE-A0524
30 compartments



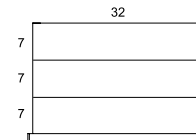
R_EE-A0732
40 compartments



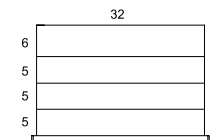
R_EE-A0740
48 compartments



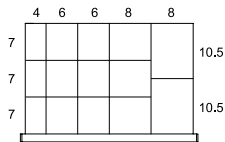
R_EE-C0404
9 compartments



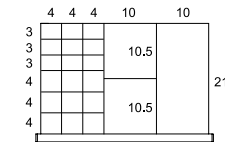
R_EE-B0200
3 compartments



R_EE-B0300
4 compartments

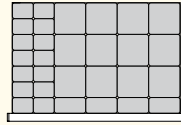


R_EE-D0409
14 compartments

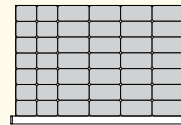


R_EE-D0416
21 compartments

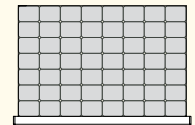
Plastic Bins



R_EE-E030
30 bins

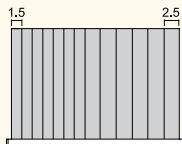


R_EE-E042
42 bins

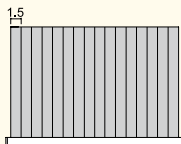


R_EE-E056
56 bins

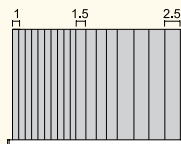
Groove Trays



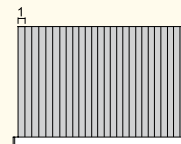
R_EE-G01303
13 groove trays



R_EE-G01603
16 groove trays



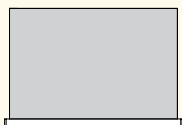
R_EE-G01803
18 groove trays



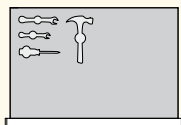
R_EE-G02603
26 groove trays

2 dividers included with each groove tray.

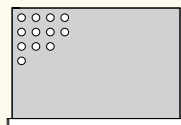
Foam



R_EE-J0103
For protection

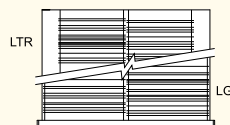


R_EE-J0203
For tools



R_EE-J0303
For collets

Folder Hanging Bars



R_EE-KFB12



R_EE-KLR12

Sold without cut-outs. For custom cut-outs,

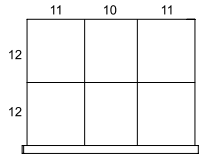
SEE PAGE 195

36" x 27" (W x D) Drawers

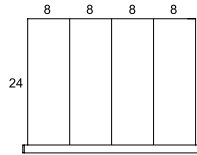
For Cabinet

For Multi-Drawer

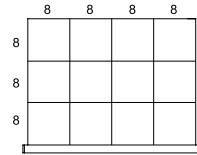
Partitions and Dividers



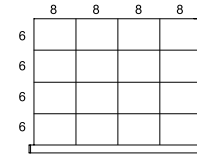
R_EG-A0203
6 compartments



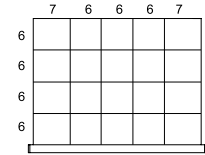
R_EG-A0300
4 compartments



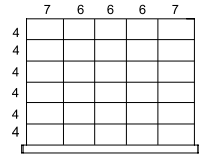
R_EG-A0308
12 compartments



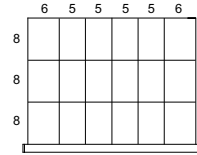
R_EG-A0312
16 compartments



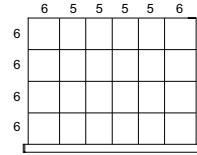
R_EG-A0415
20 compartments



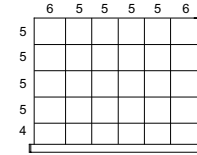
R_EG-A0425
30 compartments



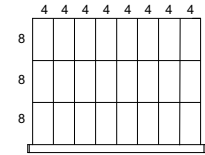
R_EG-A0512
18 compartments



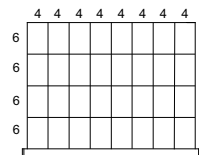
R_EG-A0518
24 compartments



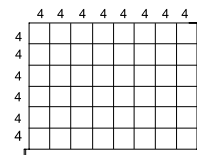
R_EG-A0524
30 compartments



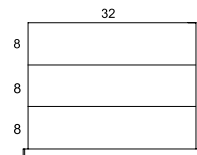
R_EG-A0716
24 compartments



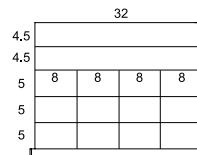
R_EG-A0724
32 compartments



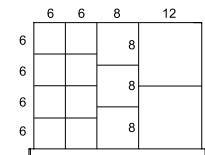
R_EG-A0740
48 compartments



R_EG-B0200
3 compartments

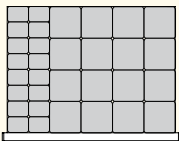


R_EG-C0508
14 compartments

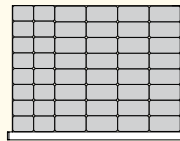


R_EG-D0309
13 compartments

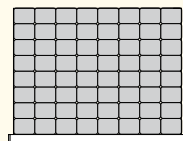
Plastic Bins



R_EG-E032
32 bins

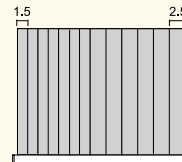


R_EG-E048
48 bins

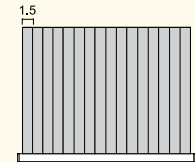


R_EG-E064
64 bins

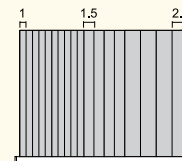
Groove Trays



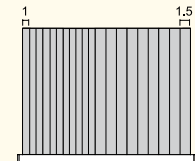
R_EG-G01303
13 groove trays



R_EG-G01603
16 groove trays

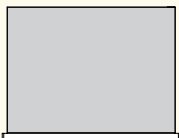


R_EG-G01803
18 groove trays

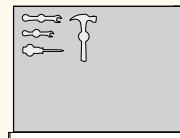


R_EG-G02003
20 groove trays

Foam



R_EG-J0103
For protection

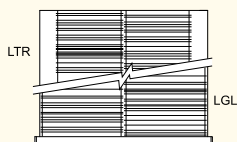


R_EG-J0203
For tools

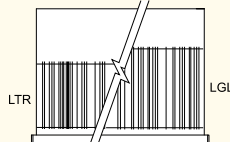
! Sold without cut-outs.
For custom cut-outs,

SEE
PAGE
195

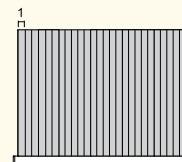
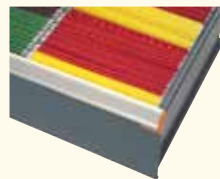
Folder Hanging Bars



R_EG-KFB12



R_EG-KLR12



R_EG-G02603
26 groove trays

2 dividers included with each groove tray.

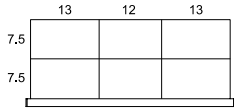
MODULAR DRAWER

42" x 18" (W x D) Drawers

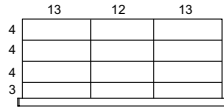
For Shelving

MODULAR DRAWER

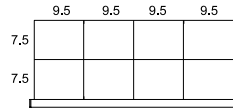
Partitions and Dividers



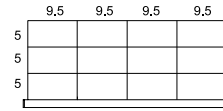
R_GC-A0203
6 compartments



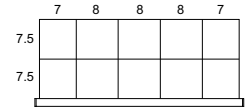
R_GC-A0209
12 compartments



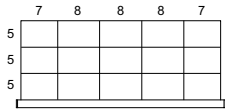
R_GC-A0304
8 compartments



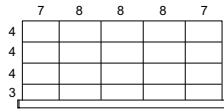
R_GC-A0308
12 compartments



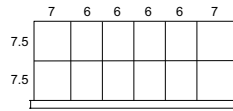
R_GC-A0405
10 compartments



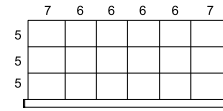
R_GC-A0410
15 compartments



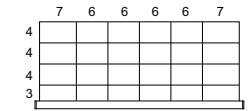
R_GC-A0415
20 compartments



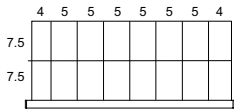
R_GC-A0506
12 compartments



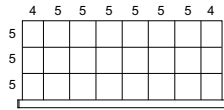
R_GC-A0512
18 compartments



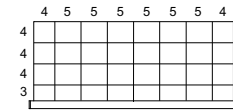
R_GC-A0518
24 compartments



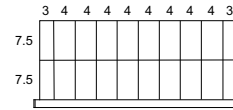
R_GC-A0708
16 compartments



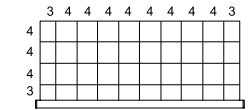
R_GC-A0716
24 compartments



R_GC-A0724
32 compartments

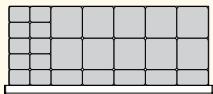


R_GC-A0910
20 compartments

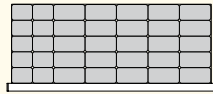


R_GC-A0930
40 compartments

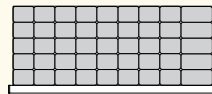
Plastic Bins



R_GC-E025
25 bins

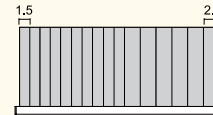


R_GC-E035
35 bins

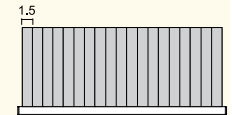


R_GC-E045
45 bins

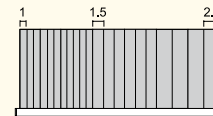
Groove Trays



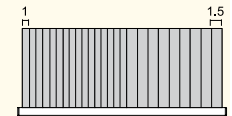
R_GC-G01603
16 groove trays



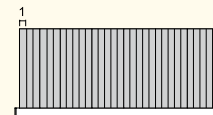
R_GC-G01903
19 groove trays



R_GC-G02103
21 groove trays



R_GC-G02503
25 groove trays



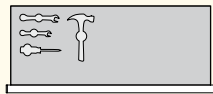
R_GC-G03103
31 groove trays

2 dividers included with each groove tray.

Foam



R_GC-J0103
For protection

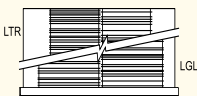


R_GC-J0203
For tools

Sold without cut-outs.
For custom cut-outs,

SEE PAGE 195

Folder Hanging Bars



R_GC-KFB12



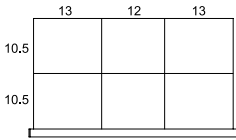
R_GC-KLR12



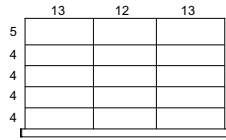
42" x 24" (W x D) Drawers

For Shelving

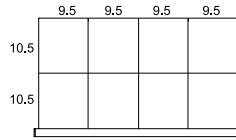
Partitions and Dividers



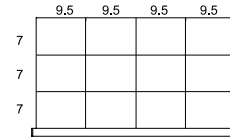
R_GE-A0203
6 compartments



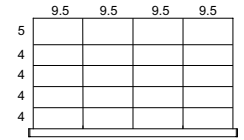
R_GE-A0212
15 compartments



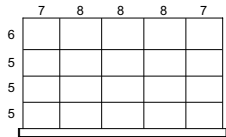
R_GE-A0304
8 compartments



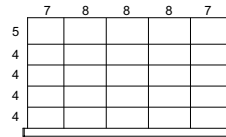
R_GE-A0308
12 compartments



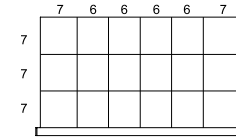
R_GE-A0316
20 compartments



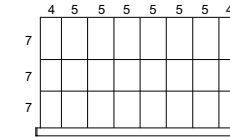
R_GE-A0415
20 compartments



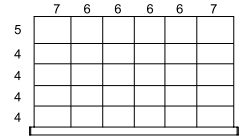
R_GE-A0420
25 compartments



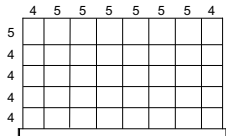
R_GE-A0512
18 compartments



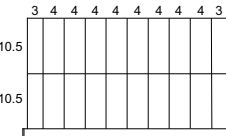
R_GE-A0716
24 compartments



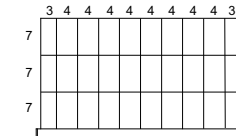
R_GE-A0524
30 compartments



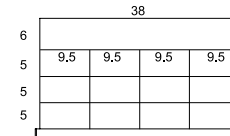
R_GE-A0732
40 compartments



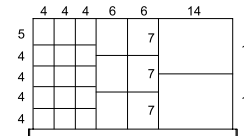
R_GE-A0910
20 compartments



R_GE-A0920
30 compartments

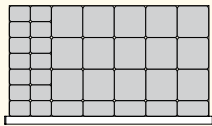


R_GE-C0408
13 compartments

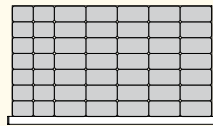


R_GE-D0517
23 compartments

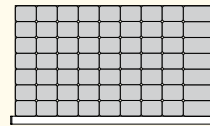
Plastic Bins



R_GE-E034
34 bins

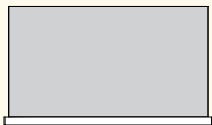


R_GE-E049
49 bins

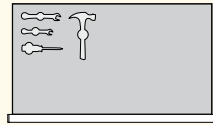


R_GE-E063
63 bins

Foam



R_GE-J0103
For protection

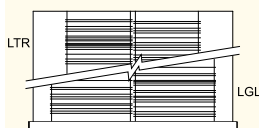


R_GE-J0203
For tools

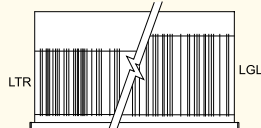
Sold without cut-outs.
For custom cut-outs,

SEE
PAGE
195

Folder Hanging Bars

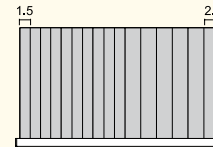


R_GE-KFB12

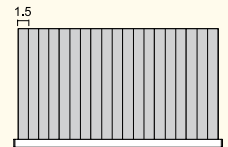


R_GE-KLR12

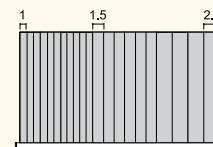
Groove Trays



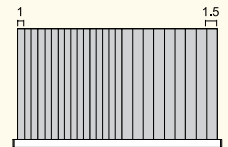
R_GE-G01603
16 groove trays



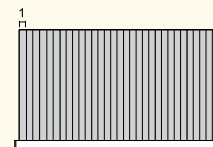
R_GE-G01903
19 groove trays



R_GE-G02103
21 groove trays



R_GE-G02503
25 groove trays



R_GE-G03103
31 groove trays

2 dividers included with each groove tray.

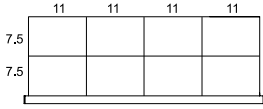


MODULAR DRAWER

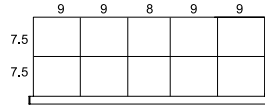
48" x 18" (W x D) Drawers

For Shelving

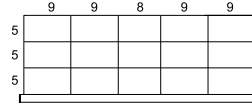
Partitions and Dividers



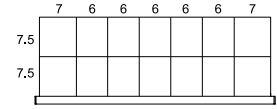
R_HC-A0304
8 compartments



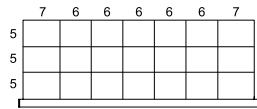
R_HC-A0405
10 compartments



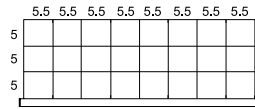
R_HC-A0410
15 compartments



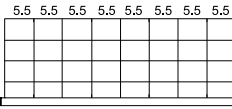
R_HC-A0607
14 compartments



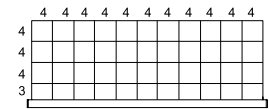
R_HC-A0614
21 compartments



R_HC-A0716
24 compartments



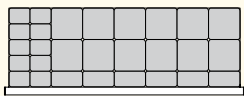
R_HC-A0724
32 compartments



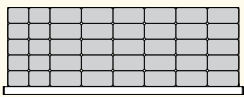
R_HC-A1033
44 compartments

MODULAR DRAWER

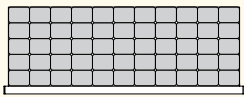
Plastic Bins



R_HC-E028
28 bins

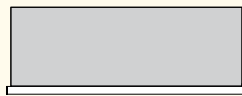


R_HC-E040
40 bins

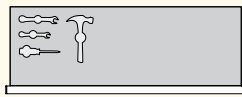


R_HC-E055
55 bins


Foam



R_HC-J0103
For protection

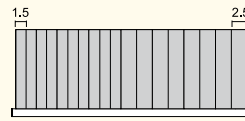


R_HC-J0203
For tools

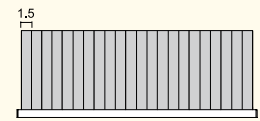
 Sold without cut-outs.
For custom cut-outs,

SEE
PAGE
195

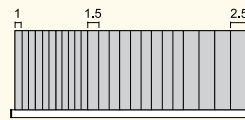
Groove Trays



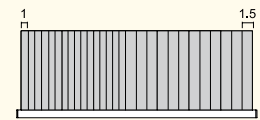
R_HC-G01803
18 groove trays



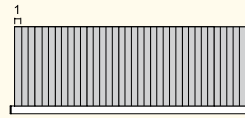
R_HC-G02203
22 groove trays



R_HC-G02403
24 groove trays



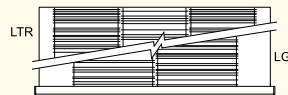
R_HC-G02803
28 groove trays



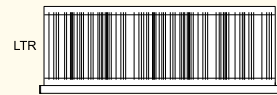
R_HC-G03603
36 groove trays

2 dividers included with
each groove tray.

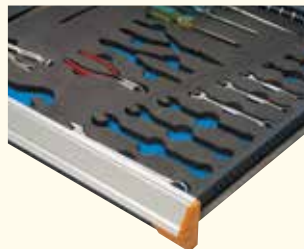
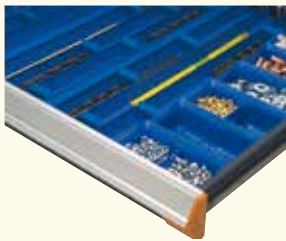
Folder Hanging Bars



R_HC-KFB12



R_HC-KLR12



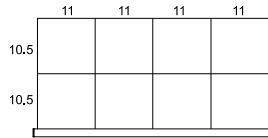
48" x 24" (W x D) Drawers

For Cabinet

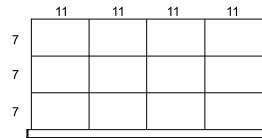
For Shelving

For Multi-Drawer

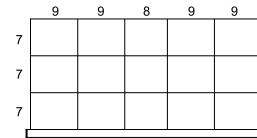
Partitions and Dividers



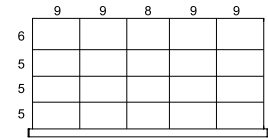
R_HE-A0304
8 compartments



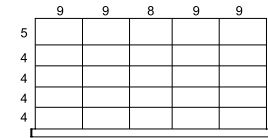
R_HE-A0308
12 compartments



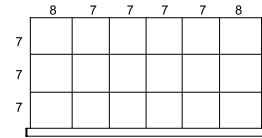
R_HE-A0410
15 compartments



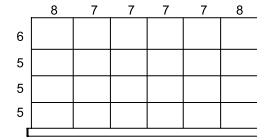
R_HE-A0415
20 compartments



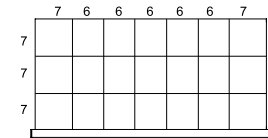
R_HE-A0420
24 compartments



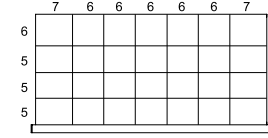
R_HE-A0512
18 compartments



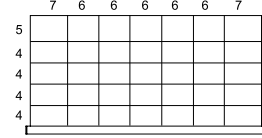
R_HE-A0518
24 compartments



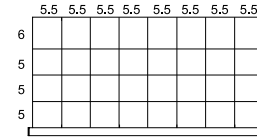
R_HE-A0614
21 compartments



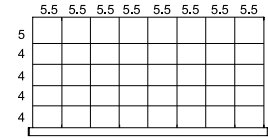
R_HE-A0621
28 compartments



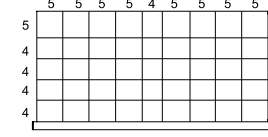
R_HE-A0628
35 compartments



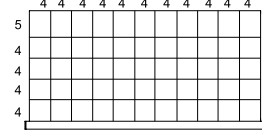
R_HE-A0724
32 compartments



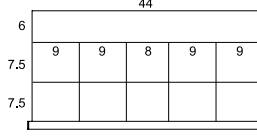
R_HE-A0732
40 compartments



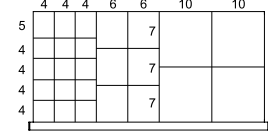
R_HE-A0836
45 compartments



R_HE-A1044
55 compartments

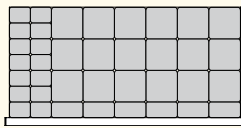


R_HE-C0505
11 compartments

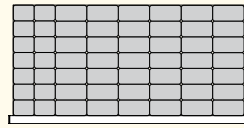


R_HE-D0618
25 compartments

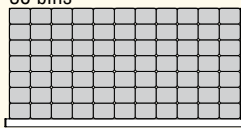
Plastic Bins



R_HE-E038
38 bins

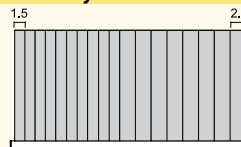


R_HE-E056
56 bins

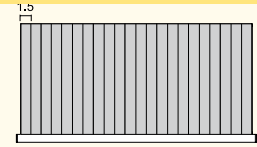


R_HE-E077
77 bins

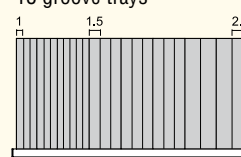
Groove Trays



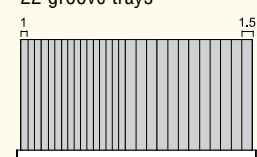
R_HE-G01803
18 groove trays



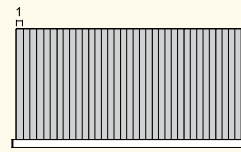
R_HE-G02203
22 groove trays



R_HE-G02403
24 groove trays



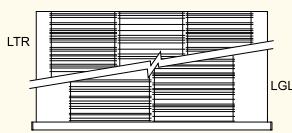
R_HE-G02803
28 groove trays



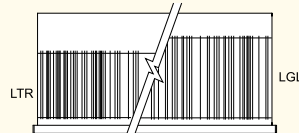
R_HE-G03603
36 groove trays

2 dividers included with each groove tray.

Folder Hanging Bars



R_HE-KFB12

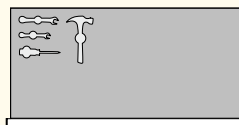


R_HE-KLR12

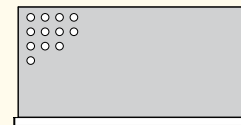
Foam



R_HE-J0103
For protection



R_HE-J0203
For tools



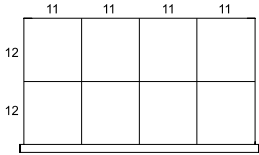
R_HE-J0303
For collets



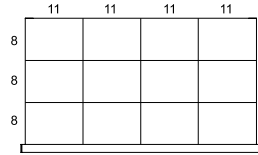
Sold without cut-outs.
For custom cut-outs,

SEE PAGE 195

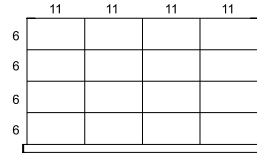
Partitions and Dividers



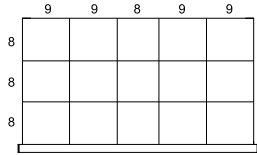
R_HG-A0304
8 compartments



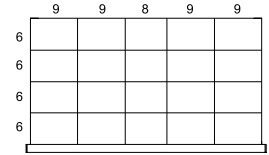
R_HG-A0308
12 compartments



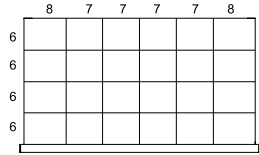
R_HG-A0312
16 compartments



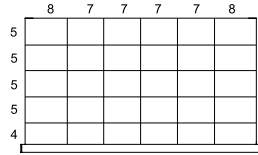
R_HG-A0410
15 compartments



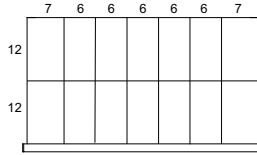
R_HG-A0415
20 compartments



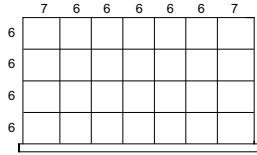
R_HG-A0518
24 compartments



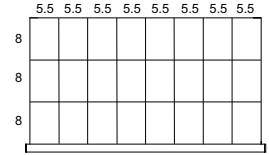
R_HG-A0524
30 compartments



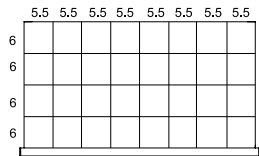
R_HG-A0607
14 compartments



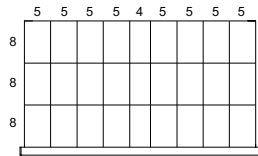
R_HG-A0621
28 compartments



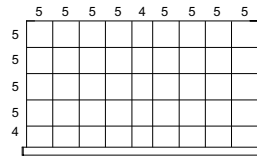
R_HG-A0716
24 compartments



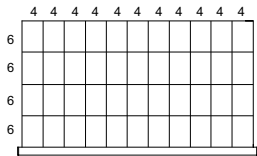
R_HG-A0724
32 compartments



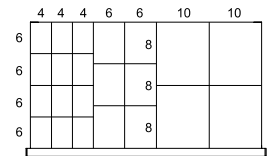
R_HG-A0818
27 compartments



R_HG-A0836
45 compartments

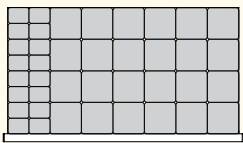


R_HG-A1033
44 compartments

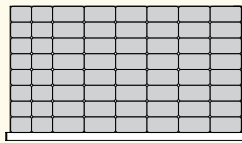


R_HG-D0615
22 compartments

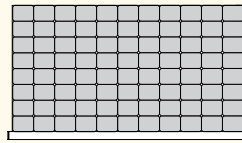
Plastic Bins



R_HG-E040
40 bins

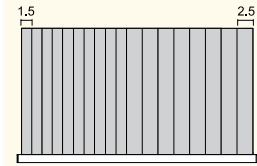


R_HG-E064
64 bins

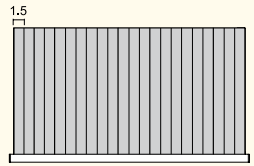


R_HG-E088
88 bins

Groove Trays



R_HG-G01803
18 groove trays

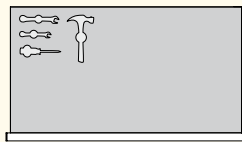


R_HG-G02203
22 groove trays

Foam



R_HG-J0103
For protection

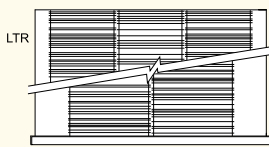


R_HG-J0203
For tools

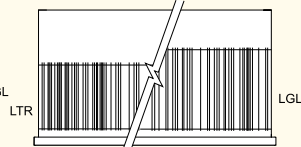
Sold without cut-outs.
For custom cut-outs,

SEE
PAGE
195

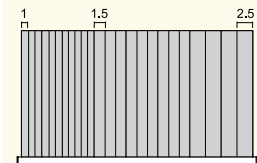
Folder Hanging Bars



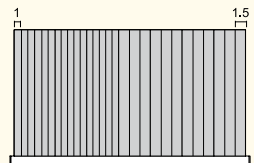
R_HG-KFB12



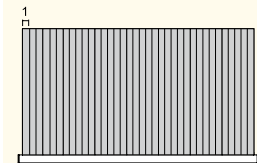
R_HG-KLR12



R_HG-G02403
24 groove trays



R_HG-G02803
28 groove trays



R_HG-G03603
36 groove trays

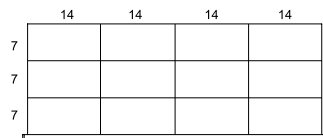
2 dividers included
with each groove tray.

60" x 24" (W x D) Drawers

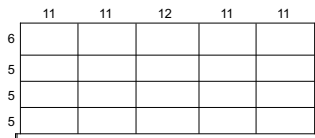
For Cabinet

For Multi-Drawer

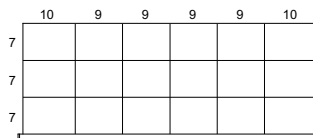
Partitions and Dividers



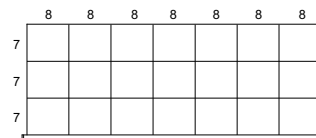
R_KE-A0308
12 compartments



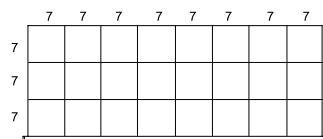
R_KE-A0415
20 compartments



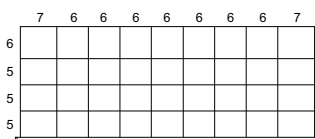
R_KE-A0512
18 compartments



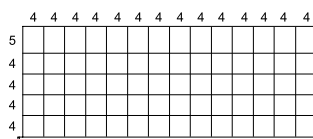
R_KE-A0614
21 compartments



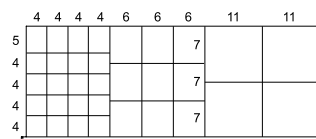
R_KE-A0716
24 compartments



R_KE-A0827
36 compartments



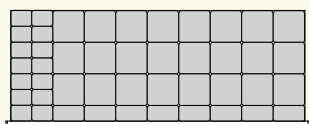
R_KE-A1356
70 compartments



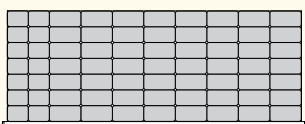
R_KE-D0824
33 compartments

MODULAR DRAWER

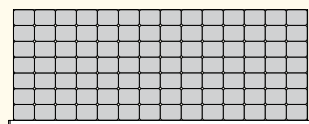
Plastic Bins



R_KE-E046
46 bins

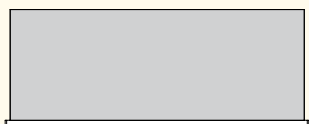


R_KE-E070
70 bins

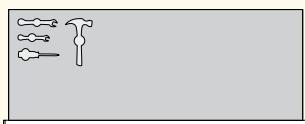


R_KE-E098
98 bins

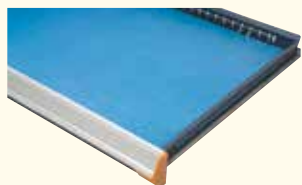
Foam



R_KE-J0103
For protection



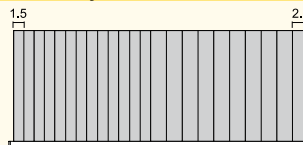
R_KE-J0203
For tools



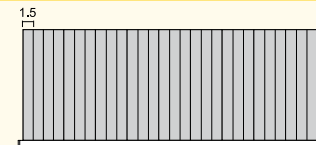
**Sold without cut-outs.
For custom cut-outs,**

SEE
PAGE
195

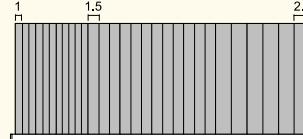
Groove Trays



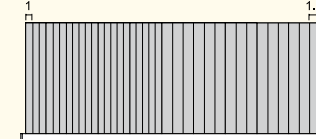
R_KE-G02303
23 groove trays



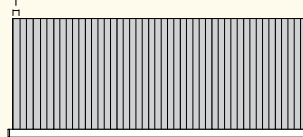
R_KE-G02803
28 groove trays



R_KE-G02903
29 groove trays



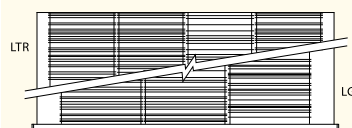
R_KE-G03603
36 groove trays



R_KE-G04603
46 groove trays

2 dividers included
with each groove tray.

Folder Hanging Bars

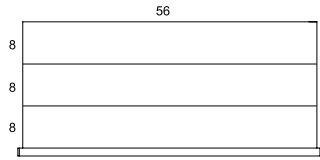


R_KE-KFB12

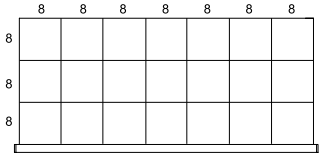


Partitions and Dividers

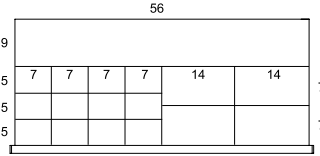
MODULAR DRAWER



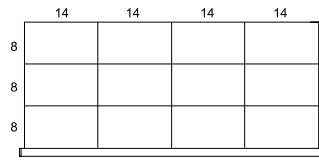
R_KG-B0200
3 compartments



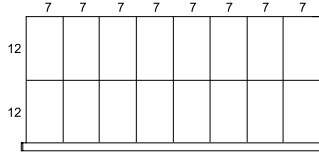
R_KG-A0614
21 compartments



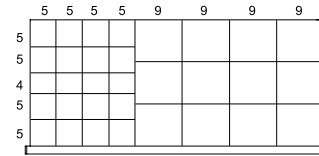
R_KG-C0610
17 compartments



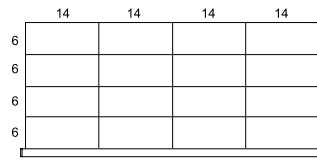
R_KG-A0308
12 compartments



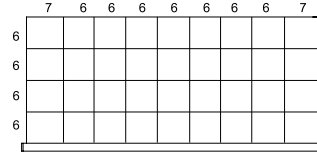
R_KG-A0708
16 compartments



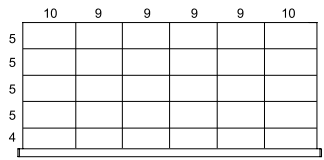
R_KG-D0724
32 compartments



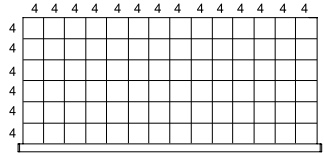
R_KG-A0312
16 compartments



R_KG-A0827
36 compartments

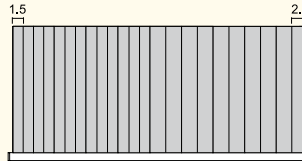


R_KG-A0524
30 compartments

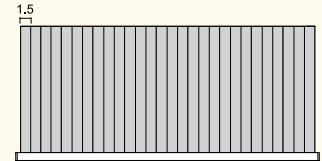


R_KG-A1370
84 compartments

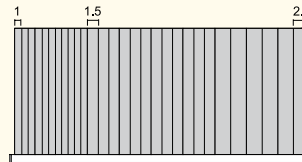
Groove Trays



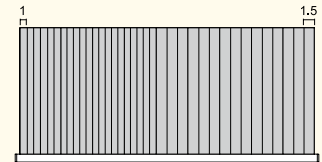
R_KG-G02303
23 groove trays



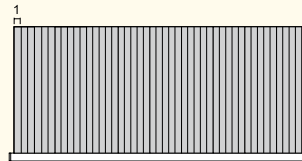
R_KG-G02803
28 groove trays



R_KG-G02903
29 groove trays



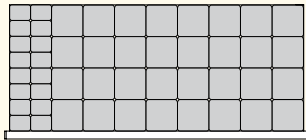
R_KG-G03603
36 groove trays



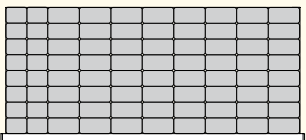
R_KG-G04603
46 groove trays

2 dividers included
with each groove tray.

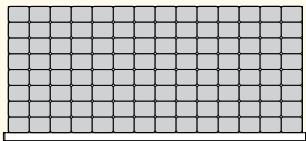
Plastic Bins



R_KG-E048
48 bins

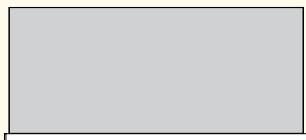


R_KG-E080
80 bins

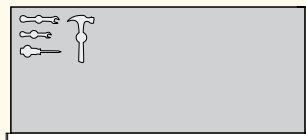


R_KG-E112
112 bins

Foam



R_KG-J0103
For protection

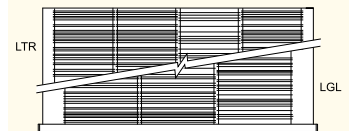


R_KG-J0203
For tools

Sold without cut-outs.
For custom cut-outs, SEE PAGE 195



Folder Hanging Bars



R_KG-KFB12